

# CARS

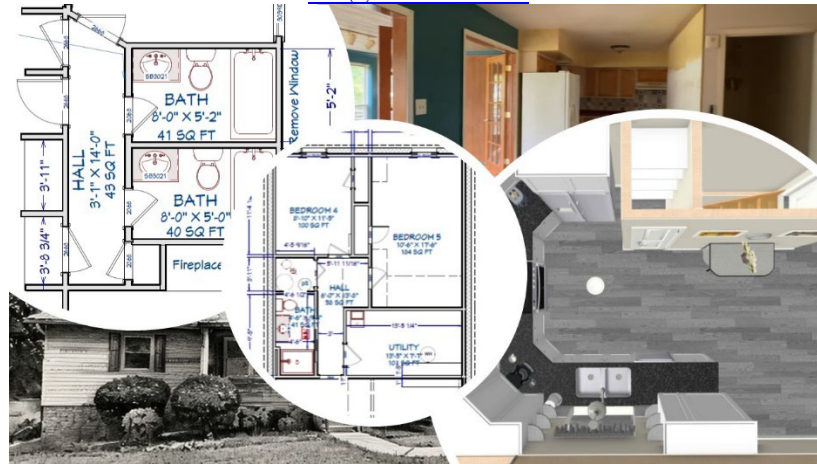
## CHRIST-CENTERED ADDICTION RESTORATION SERVICES

16100 Rogers Road, Culpeper VA, 22701

[www.HeRestores.com](http://www.HeRestores.com)

Facebook.com/HeRestoresVA

[Info@HeRestores.com](mailto:Info@HeRestores.com)



### CARS Home Renovations Are Ready to Begin

### ADOPT A ROOM...ADOPT PART OF A ROOM...HELP US DEMO AND/OR REFURBISH A ROOM

The CARS organization is ready to make good on its commitment to own and operate a long-term faith-based recovery home for women in the area. We have worked with many contractors to finalize a renovation plan for our home and now we are ready to present this opportunity to our community asking you to consider if and how you might be able to help us in our efforts to bring this home to life again. In the pages to follow you will find all types of information...some of it will speak to you more than others.

**Pictures of the Home As It Stands Today:** The home has been seasoned with love for many decades, but it needs much attention to restore it to something that will bless the women who will come into our program.

**CAD Drawings of Each Room:** These drawings will help you understand some of the changes we are trying to bring to this home to maximize its potential.

**Detailed Pricing Sheets:** The sheets help you understand how the final price of renovation for each room was calculated. It is our hope and prayer that we will have many volunteers who come out to help us perform this work, but we chose to price each room at its maximum cost in case the work needs to be turned over to professionals.

You can mail a check to 16100 Rogers Road, Culpeper, Virginia 22701  
Online Giving: [www.HeRestores.com/donate](http://www.HeRestores.com/donate) [Choose "Capital Expenditures-House" Fund] Add a note if you are adopting a room or part of a room]

## INDOOR RENOVATION COSTS\* ROOM BY ROOM

These Costs Were Calculated As If All Work Was Performed by Contractors

Construction Items .....	\$1306.00
Den .....	\$8408.75
Counseling Room.....	\$5802.01
Bedroom #1 (House Manager).....	\$4008.38
Bedroom #2.....	\$5572.00
Bedroom #3.....	\$8141.04
Bathroom #1.....	\$13,839.76
Bathroom #2.....	\$6843.57
Basement Main Room.....	\$15,603.38
Kitchen .....	\$29,375.19
Great Room.....	\$6079.05
Hall and Stairs.....	\$5130.87
Sunroom.....	\$13,886.53
Basement Bath/Hall .....	\$20,137.47
Basement Bonus Room #1 .....	\$5415.11
Basement Bonus Room #2 .....	\$3599.97
Utility Room.....	\$10,954.73
HVAC .....	\$6433.28

## CARS' Mission

To Bring Restoration to Lives Destroyed by Addiction



[Click Here](#) or Scan the QR Code to Donate now!

## Table of Contents

Click on the room titles to go to the corresponding page

Construction Items .....	4
Den .....	6
Counseling Room.....	15
Bedroom #1 (House Manager).....	23
Bedroom #2.....	31
Bedroom #3.....	42
Bathroom #1.....	51
Bathroom #2.....	64
Basement Main Room.....	71
Kitchen .....	80
Great Room.....	90
Hall and Stairs.....	98
Sunroom.....	104
Basement Bath/Hall .....	113
Basement Bonus Room #1 .....	129
Basement Bonus Room #2 .....	137
Utility Room.....	147
HVAC .....	153

# CARS™

## CHRIST-CENTERED ADDICTION RESTORATION SERVICES



### **C.A.R.S. Necessary Items for Construction**



CHRIST-CENTERED ADDICTION  
RESTORATION SERVICES

## Estimate

Job Name	C.A.R.S. Necessary Items for Construction
Job Number	1484
Issue Date	November 17, 2024
Valid Until	December 17, 2024

Item	Quantity	Amount
<b>General items for construction throughout duration of Job</b>		<b>\$1,360.00</b>
<b>Dumpster</b> <i>30 yard</i>  <i>Per trip</i>	<b>1 Ea</b>	<b>\$800.00</b>
<b>Disposable Gloves</b>	<b>1 SF</b>	<b>\$25.00</b>
<b>Protection,</b> <i>rolls of plastic, tape and builders paper</i>  <i>Allowance</i>	<b>1 SF</b>	<b>\$200.00</b>
<b>Dust Masks</b> <i>Disposable n-95 - 10 pack</i>	<b>5 SF</b>	<b>\$125.00</b>
<b>Contractor Trash Bags</b> <i>Heavy Duty 42 gallon contractor trash bags</i>  <i>100 bags</i>	<b>1 SF</b>	<b>\$60.00</b>
<b>Cleaning supplies and rags</b>	<b>1 SF</b>	<b>\$150.00</b>
<b>Price</b>		<b>\$1,360.00</b>

[Click Here to Return to Table of Contents](#)

# CARS™

CHRIST-CENTERED ADDICTION  
RESTORATION SERVICES



## C.A.R.S. Den

Mailing Address  
16100 Rogers Road Culpeper Va 22701



CHRIST-CENTERED ADDICTION  
RESTORATION SERVICES

## Estimate

Job Name	C.A.R.S. Den
Job Number	1460 Den
Issue Date	November 17, 2024
Valid Until	December 17, 2024

Item	Quantity	Amount
<b>Den</b>		<b>\$8,408.75</b>
<b>Painting</b>		<b>\$1,991.56</b>
<b>Ceilings</b>	<b>209 SF</b>	<b>\$504.78</b>
<i>Materials and Labor to paint 1 coat primer, 2 coats flat or eggshell wall paint Sherwin Williams Super-paint or Cashmere</i>		
<i>Paint includes light prep, filling of nail holes etc. Actual drywall work could incur additional charges.</i>		
<b>Walls</b>	<b>456 SF</b>	<b>\$1,039.80</b>
<i>Materials and Labor to paint 1 coat primer, 2 coats flat or eggshell wall paint Sherwin Williams Super-paint or Cashmere</i>		
<i>Paint includes light prep, filling of nail holes etc. Actual drywall work could incur additional charges.</i>		
<b>Trim</b>	<b>95 LF</b>	<b>\$262.18</b>
<i>Materials and Labor to paint Baseboards and Window Casing</i>		
<b>Doors</b>	<b>1 Ea</b>	<b>\$184.80</b>
<i>Materials and Labor to paint Exterior door slab. Sherwin Williams Super Paint or Cashmere</i>		
<b>Electrical</b>		<b>\$525.37</b>
<b>Materials and Labor to replace existing light switches and receptacles and cover plates with new standard white toggle switches and receptacles.</b>	<b>7 Ea</b>	<b>\$216.17</b>
<i>Includes outlet or switch and cover only (no wire or box)</i>		
<b>Ceiling Fans, Decorative ceiling fans, 44" five blade fan with light</b>	<b>1 Ea</b>	<b>\$309.20</b>
<b>Flooring</b>		<b>\$5,891.82</b>
<b>Remove Existing Carpet</b>	<b>215 SF</b>	<b>\$225.75</b>
<i>Materials and Labor to remove existing carpet, padding and tacks and put in dumpster.</i>		
<i>Price does not include removal or repair of any additional underlayment or any other condition that prevents the installation of LVP flooring</i>		

Item	Quantity	Amount
<b>Luxury Vinyl Plank Flooring</b>	<b>237 SF</b>	<b>\$2,152.08</b>
<i>Materials and Labor to install Luxury Vinyl Plank flooring.</i>		
<i>Flooring allowance \$4.00/ sqft</i>		
<i>Flooring is figured at a 10% waste and will be calculated to the nearest full box.</i>		
<i>Some floorings will require underlayment. Additional charges will apply to install underlayment.</i>		
<b>Materials and Labor to install and paint shoe molding</b>	<b>67 LF</b>	<b>\$265.40</b>
<i>Labor costs here can also be used for hardwood moldings in the previous section</i>		
<b>Remove wall to sunroom</b>		<b>\$3,248.59</b>
<b>Demolition</b>	<b>1 SF</b>	<b>\$1,054.54</b>
<i>Materials and Labor to remove existing bearing wall, includes temporary support</i>		
<b>LVL</b>	<b>1 SF</b>	<b>\$1,898.24</b>
<i>Materials and Labor to install triple 14" LVL approximately 15 lft between dining and sunroom.</i>		
<i>Load is assumed to transfer to foundation wall. Additional cost may apply if load needs to transfer to footings at basement level.</i>		
<b>Drywall Repair</b>	<b>1 SF</b>	<b>\$295.81</b>
<i>Materials and Labor to repair drywall and finish in preparation for paint</i>		
<b>Price</b>		<b>\$8,408.75</b>















[Click Here to Return to Table of Contents](#)

# CARS™

CHRIST-CENTERED ADDICTION  
RESTORATION SERVICES



## C.A.R.S. Counseling Room

Mailing Address  
16100 Rogers Road Culpeper Va 22701



CHRIST-CENTERED ADDICTION  
RESTORATION SERVICES

## Estimate

Job Name	C.A.R.S. Counseling Room
Job Number	1460 Counseling
Issue Date	November 2, 2024
Valid Until	

Item	Quantity	Amount
<b>Counciling Room ?</b>		<b>\$5,802.01</b>
<i>See attached sketch</i>		
<b>Carpentry</b>		<b>\$469.31</b>
<b>Close in smaller cased opening</b>	1 SF	\$140.76
<i>Materials and Labor to completely frame in 3'3" opening to kitchen</i>		
<b>Close in large cased opening</b>	1 SF	\$176.51
<i>Materials and Labor to:</i>		
<i>Frame existing 6'1" opening to allow for a 36 inch pre-hung interior door</i>		
<b>Trim</b>	12 LF	\$152.04
<i>Materials and Labor to instal 3 1/4 inch baseboard to match existing</i>		
<i>Approximately 12 lft</i>		
<b>Drywall</b>		<b>\$443.72</b>
<b>New Drywall</b>	1 SF	\$443.72
<i>Materials and Labor to hang and finish drywall at both openings</i>		
<i>Approximately 90 sqft</i>		
<b>Painting</b>		<b>\$1,522.92</b>
<b>Ceilings</b>	120 SF	\$289.83
<i>Materials and Labor to paint 1 coat primer, 2 coats flat or eggshell wall paint Sherwin Williams Super-paint or Cashmere</i>		
<i>Paint includes light prep, filling of nail holes etc. Actual drywall work could incur additional charges.</i>		
<b>Walls</b>	352 SF	\$802.66
<i>Materials and Labor to paint 1 coat primer, 2 coats flat or eggshell wall paint Sherwin Williams Super-paint or Cashmere</i>		
<i>Paint includes light prep, filling of nail holes etc. Actual drywall work could incur additional charges.</i>		



Item	Quantity	Amount
<b>Trim</b> <i>Materials and Labor to paint Baseboards and Window Casing</i>	89 LF	\$245.63
<b>Doors</b> <i>Materials and Labor to paint Exterior door slab. Sherwin Williams Super Paint or Cashmere</i>	1 Ea	\$184.80
<b>Flooring</b>		<b>\$1,498.93</b>
<b>Remove Existing Carpet</b> <i>Materials and Labor to remove existing carpet, padding and tacks and put in dumpster.</i>  <i>Price does not include removal or repair of any additional underlayment or any other condition that prevents the installation of LVP flooring</i>	120 SF	\$126.01
<b>Luxury Vinyl Plank Flooring</b> <i>Materials and Labor to install Luxury Vinyl Plank flooring.</i>  <i>Flooring allowance \$4.00/ sqft</i>  <i>Flooring is figured at a 10% waste and will be calculated to the nearest full box.</i>  <i>Some floorings will require underlayment. Additional charges will apply to install underlayment.</i>	132 SF	\$1,198.63
<b>Materials and Labor to install and paint shoe molding</b> <i>Labor costs here can also be used for hardwood moldings in the previous section</i>	44 LF	\$174.29
<b>Electrical</b>		<b>\$463.62</b>
<b>Ceiling Fans, Decorative ceiling fans, 44" five blade fan with light</b>	1 Ea	\$309.20
<b>Materials and Labor to replace existing light switches and receptacles and cover plates with new standard white toggle switches and receptacles.</b> <i>Includes outlet or switch and cover only (no wire or box)</i>	5 Ea	\$154.42
<b>Sound Proofing</b>		<b>\$1,034.89</b>
<b>Demolition</b> <i>Materials and Labor to remove drywall on 2 interior walls Approximately 184 sqft</i>	1 SF	\$245.76
<b>Sound Proof Insulation</b> <i>Materials and Labor to install 3" x 15 1/4" Rockwool sound proof insulation</i>  <i>Approximately 184 sqft</i>	184 SF	\$502.32
<b>Drywall</b> <i>Materials and Labor to hang and finish drywall after soundproofing</i>	184 SF	\$286.81
<b>Misc.</b>		<b>\$368.62</b>
<b>Doors Knobs</b>	1 Ea	\$64.76
<b>Hardware, Door stops, Wall bumper, 3" long, brass</b> <i>Materials and Labor to install door stops</i>	2 Ea	\$30.67

Item	Quantity	Amount
<b>Horizontal blinds, 1" wide Faux wood</b> <i>Materials and Labor to install horizontal blinds</i>	24 SF	\$273.19
<b>Things to Consider</b>		<b>\$0.00</b>
<b>Additional lighting or lamps</b> <i>To be considered</i>	1 SF	\$0.00
<hr/> <b>Price</b> <hr/>		<b>\$5,802.01</b> <hr/>









[Click Here to Return to Table of Contents](#)

# CARS™

## CHRIST-CENTERED ADDICTION RESTORATION SERVICES



### **C.A.R.S. Bedroom 1 House Manager**

Mailing Address  
16100 Rogers Road Culpeper Va 22701



CHRIST-CENTERED ADDICTION  
RESTORATION SERVICES

## Estimate

Job Name	C.A.R.S. Bedroom 1 House Manager
Job Number	1460 Bedroom 1 (House Manager)
Issue Date	November 14, 2024
Valid Until	December 14, 2024

Item	Quantity	Amount
<b>Bedroom 1</b>		<b>\$4,008.38</b>
<b>Painting</b>		<b>\$1,855.83</b>
<b>Ceilings</b>	<b>111 SF</b>	<b>\$268.10</b>
<i>Materials and Labor to paint 1 coat primer, 2 coats flat or eggshell wall paint Sherwin Williams Super-paint or Cashmere</i>		
<i>Paint includes light prep, filling of nail holes etc. Actual drywall work could incur additional charges.</i>		
<b>Walls</b>	<b>464 SF</b>	<b>\$1,058.05</b>
<i>Materials and Labor to paint 1 coat primer, 2 coats flat or eggshell wall paint Sherwin Williams Super-paint or Cashmere</i>		
<i>Paint includes light prep, filling of nail holes etc. Actual drywall work could incur additional charges.</i>		
<b>Trim</b>	<b>58 LF</b>	<b>\$160.08</b>
<i>Materials and Labor to paint Baseboards and Window Casing</i>		
<b>Doors</b>	<b>2 Ea</b>	<b>\$369.60</b>
<i>Materials and Labor to paint Exterior door slab. Sherwin Williams Super Paint or Cashmere</i>		
<b>Flooring</b>		<b>\$1,463.19</b>
<b>Remove Existing Carpet</b>	<b>111 SF</b>	<b>\$116.56</b>
<i>Materials and Labor to remove existing carpet, padding and tacks and put in dumpster.</i>		
<i>Price does not include removal or repair of any additional underlayment or any other condition that prevents the installation of LVP flooring</i>		
<b>Luxury Vinyl Plank Flooring</b>	<b>123 SF</b>	<b>\$1,116.90</b>
<i>Materials and Labor to install Luxury Vinyl Plank flooring.</i>		
<i>Flooring allowance \$4.00/ sqft</i>		
<i>Flooring is figured at a 10% waste and will be calculated to the nearest full box.</i>		
<i>Some floorings will require underlayment. Additional charges will apply to install underlayment.</i>		



Item	Quantity	Amount
<p><b>Materials and Labor to install and paint shoe molding</b></p> <p><i>Labor costs here can also be used for hardwood moldings in the previous section</i></p>	58 LF	\$229.73
<b>Electrical</b>		<b>\$325.30</b>
<p><b>Flush mount light</b></p> <p><i>7-3/8" diameter x 4-1/2" high. Uses one medium base bulb, 60-watt maximum (not included)</i></p>	1 Ea	\$109.13
<p><b>Materials and Labor to replace existing light switches and receptacles and cover plates with new standard white toggle switches and receptacles.</b></p> <p><i>Includes outlet or switch and cover only (no wire or box)</i></p>	7 Ea	\$216.17
<b>Misc.</b>		<b>\$364.06</b>
<p><b>Doors Knobs</b></p>	2 Ea	\$129.53
<p><b>Hardware, Door stops, Wall bumper, 3" long, brass</b></p> <p><i>Materials and Labor to install door stops</i></p>	2 Ea	\$30.67
<p><b>Horizontal blinds, 1" wide vinyl</b></p> <p><i>Materials and Labor to install horizontal blinds</i></p>	24 SF	\$203.86
<b>Price</b>		<b>\$4,008.38</b>











[Click Here to Return to Table of Contents](#)

# CARS™

## CHRIST-CENTERED ADDICTION RESTORATION SERVICES



### **C.A.R.S. Bedroom 2**

Mailing Address  
16100 Rogers Road Culpeper Va 22701



CHRIST-CENTERED ADDICTION  
RESTORATION SERVICES

## Estimate

Job Name	C.A.R.S. Bedroom 2
Job Number	1460 Bedroom 2
Issue Date	November 14, 2024
Valid Until	December 14, 2024

Item	Quantity	Amount
<b>Bedroom 2</b>		<b>\$5,572.00</b>
<i>See attached sketch</i>		
<b>Carpentry</b>		<b>\$693.75</b>
<b>Closet doors 2-30" prehung</b>	1 Ea	\$277.96
<i>1-3/8" thick. 4-9/16" jamb. Bored for lockset</i>		
<b>Framing</b>	1 SF	\$245.76
<i>Materials and Labor to remove long closet wall</i>		
<b>Trim</b>	1 LF	\$170.03
<i>Materials and Labor to repair 3 1/4 inch baseboard to match existing</i>		
<i>Approximately 4</i>		
<b>Drywall</b>		<b>\$252.91</b>
<b>Drywall</b>	1 SF	\$252.91
<i>Materials and Labor to repair drywall where wall was removed</i>		
<b>Painting</b>		<b>\$2,094.61</b>
<b>Ceilings</b>	149 SF	\$359.87
<i>Materials and Labor to paint 1 coat primer, 2 coats flat or eggshell wall paint Sherwin Williams Super-paint or Cashmere</i>		
<i>Paint includes light prep, filling of nail holes etc. Actual drywall work could incur additional charges.</i>		
<b>Walls</b>	520 SF	\$1,185.74
<i>Materials and Labor to paint 1 coat primer, 2 coats flat or eggshell wall paint Sherwin Williams Super-paint or Cashmere</i>		
<i>Paint includes light prep, filling of nail holes etc. Actual drywall work could incur additional charges.</i>		
<b>Trim</b>	65 LF	\$179.40
<i>Materials and Labor to paint Baseboards and Window Casing</i>		



Item	Quantity	Amount
<b>Doors</b>	<b>2 Ea</b>	<b>\$369.60</b>
<i>Materials and Labor to paint Exterior door slab. Sherwin Williams Super Paint or Cashmere</i>		
<b>Flooring</b>		<b>\$1,903.12</b>
<b>Remove Existing Carpet</b>	<b>149 SF</b>	<b>\$156.45</b>
<i>Materials and Labor to remove existing carpet, padding and tacks and put in dumpster.</i>		
<i>Price does not include removal or repair of any additional underlayment or any other condition that prevents the installation of LVP flooring</i>		
<b>Luxury Vinyl Plank Flooring</b>	<b>164 SF</b>	<b>\$1,489.20</b>
<i>Materials and Labor to install Luxury Vinyl Plank flooring.</i>		
<i>Flooring allowance \$4.00/ sqft</i>		
<i>Flooring is figured at a 10% waste and will be calculated to the nearest full box.</i>		
<i>Some floorings will require underlayment. Additional charges will apply to install underlayment.</i>		
<b>Materials and Labor to install and paint shoe molding</b>	<b>65 LF</b>	<b>\$257.47</b>
<i>Labor costs here can also be used for hardwood moldings in the previous section</i>		
<b>Electrical</b>		<b>\$263.55</b>
<b>Flush mount light</b>	<b>1 Ea</b>	<b>\$109.13</b>
<i>7-3/8" diameter x 4-1/2" high. Uses one medium base bulb, 60-watt maximum (not included)</i>		
<b>Materials and Labor to replace existing light switches and receptacles and cover plates with new standard white toggle switches and receptacles.</b>	<b>5 Ea</b>	<b>\$154.42</b>
<i>Includes outlet or switch and cover only (no wire or box)</i>		
<b>Misc.</b>		<b>\$364.06</b>
<b>Doors Knobs</b>	<b>2 Ea</b>	<b>\$129.53</b>
<b>Hardware, Door stops, Wall bumper, 3" long, brass</b>	<b>2 Ea</b>	<b>\$30.67</b>
<i>Materials and Labor to install door stops</i>		
<b>Horizontal blinds, 1" wide vinyl</b>	<b>24 SF</b>	<b>\$203.86</b>
<i>Materials and Labor to install horizontal blinds</i>		
<b>Price</b>		<b>\$5,572.00</b>



















[Click Here to Return to Table of Contents](#)

# CARS™

## CHRIST-CENTERED ADDICTION RESTORATION SERVICES



### **C.A.R.S. Bedroom 3**

Mailing Address  
16100 Rogers Road Culpeper Va 22701



CHRIST-CENTERED ADDICTION  
RESTORATION SERVICES

## Estimate

Job Name	C.A.R.S. Bedroom 3
Job Number	1460 Bedroom 1
Issue Date	November 16, 2024
Valid Until	December 16, 2024

Item	Quantity	Amount
<b>Bedroom 3</b>		<b>\$8,141.04</b>
<b>Carpentry</b>		<b>\$1,595.78</b>
<b>Closet doors 2-30" prehung</b> <i>1-3/8" thick. 4-9/16" jamb. Bored for lockset</i>	<b>1 Ea</b>	<b>\$277.96</b>
<b>Framing</b> <i>Materials and Labor to frame for 2 closets Approximately 14 lft. Includes removal and framing in of 60" pocket door  Remove small closet and door at bathroom and close in  Move small wall that separates bedrooms to create 150 sqft per room</i>	<b>1 SF</b>	<b>\$811.03</b>
<b>Trim</b> <i>Materials and Labor to instal 3 1/4 inch baseboard to match existing  Approximately 12 lft</i>	<b>40 LF</b>	<b>\$506.79</b>
<b>Drywall</b>		<b>\$961.18</b>
<b>New Drywall</b> <i>Materials and Labor to hang and finish drywall at both openings Approximately 90 sqft</i>	<b>1 SF</b>	<b>\$961.18</b>
<b>Painting</b>		<b>\$2,137.73</b>
<b>Ceilings</b> <i>Materials and Labor to paint 1 coat primer, 2 coats flat or eggshell wall paint Sherwin Williams Super-paint or Cashmere  Paint includes light prep, filling of nail holes etc. Actual drywall work could incur additional charges.</i>	<b>168 SF</b>	<b>\$405.76</b>
<b>Walls</b> <i>Materials and Labor to paint 1 coat primer, 2 coats flat or eggshell wall paint Sherwin Williams Super-paint or Cashmere</i>	<b>520 SF</b>	<b>\$1,185.74</b>

Item	Quantity	Amount
<i>Paint includes light prep, filling of nail holes etc. Actual drywall work could incur additional charges.</i>		
<b>Trim</b>	<b>64 LF</b>	<b>\$176.63</b>
<i>Materials and Labor to paint Baseboards and Window Casing</i>		
<b>Doors</b>	<b>2 Ea</b>	<b>\$369.60</b>
<i>Materials and Labor to paint Exterior door slab. Sherwin Williams Super Paint or Cashmere</i>		
<b>Flooring</b>		<b>\$2,109.81</b>
<b>Remove Existing Carpet</b>	<b>168 SF</b>	<b>\$176.41</b>
<i>Materials and Labor to remove existing carpet, padding and tacks and put in dumpster.</i>		
<i>Price does not include removal or repair of any additional underlayment or any other condition that prevents the installation of LVP flooring</i>		
<b>Luxury Vinyl Plank Flooring</b>	<b>185 SF</b>	<b>\$1,679.90</b>
<i>Materials and Labor to install Luxury Vinyl Plank flooring.</i>		
<i>Flooring allowance \$4.00/ sqft</i>		
<i>Flooring is figured at a 10% waste and will be calculated to the nearest full box.</i>		
<i>Some floorings will require underlayment. Additional charges will apply to install underlayment.</i>		
<b>Materials and Labor to install and paint shoe molding</b>	<b>64 LF</b>	<b>\$253.50</b>
<i>Labor costs here can also be used for hardwood moldings in the previous section</i>		
<b>Electrical</b>		<b>\$1,023.44</b>
<b>Ceiling Light</b>	<b>1 SF</b>	<b>\$405.53</b>
<i>Materials and Labor to install ceiling light</i>		
<b>Materials and Labor to install 2 new duplex recepticals</b>	<b>2 Ea</b>	<b>\$463.49</b>
<i>15-amp, 125-volts. Quickwire push-in and side wired. Large head terminal screws accept up to 12 gauge copper or copper-clad wire. Quickwire push-in terminals accept up to 14 gauge copper or copper-clad wire. Double-wide power contacts. Plated steel mounting strap. Break-off plaster ears. Captive backed-out mounting screws. Break-off fins for 2-circuit conversion. (5-15R). UL listed</i>		
<b>Materials and Labor to replace existing light switches and receptacles and cover plates with new standard white toggle switches and receptacles.</b>	<b>5 Ea</b>	<b>\$154.42</b>
<i>Includes outlet or switch and cover only (no wire or box)</i>		
<b>Misc.</b>		<b>\$313.10</b>
<b>Doors Knobs</b>	<b>2 Ea</b>	<b>\$129.53</b>
<b>Hardware, Door stops, Wall bumper, 3" long, brass</b>	<b>2 Ea</b>	<b>\$30.67</b>
<i>Materials and Labor to install door stops</i>		
<b>Horizontal blinds, 1" wide vinyl</b>	<b>18 SF</b>	<b>\$152.90</b>
<i>Materials and Labor to install horizontal blinds</i>		
<b>Price</b>		<b>\$8,141.04</b>















[Click Here to Return to Table of Contents](#)

# CARS™

CHRIST-CENTERED ADDICTION  
RESTORATION SERVICES



## C.A.R.S. Bath 1

Mailing Address  
16100 Rogers Road Culpeper Va 22701



CHRIST-CENTERED ADDICTION  
RESTORATION SERVICES

## Estimate

Job Name	C.A.R.S. Bath 1
Job Number	1460 Bath 1
Issue Date	November 16, 2024
Valid Until	December 16, 2024

Item	Quantity	Amount
<b>Bathroom 1</b>		<b>\$12,315.97</b>
<i>Option 1</i>		
<b>Plumbing</b>		<b>\$4,044.74</b>
<b>Rough in</b>	1 Ea	\$2,359.50
<i>Allowance to re-work plumbing supply and drain to work with new layout</i>		
<b>Shower faucet</b>	1 SF	\$639.01
<i>Moen pose-temp and trim</i>		
<b>Vanity and Top</b>	1 Ea	\$533.67
<i>Colorado style. Fully assembled. Faucet sold separately. 31" high. Oak finish. Labor cost includes setting in place only</i>		
<b>Vanity faucet</b>	1 SF	\$336.05
<b>Toilet</b>	1 SF	\$176.51
<i>Re-set existing toilet</i>		
<b>Shower</b>		<b>\$2,731.37</b>
<b>Shower</b>	1 Ea	\$2,731.37
<i>Free-standing shower stall. Includes heavy-gauge walls in three-piece design.</i>		
<b>Carpentry</b>		<b>\$1,358.64</b>
<b>Demolition</b>	1 Ea	\$840.04
<i>Materials and Labor to remove existing vanity, toilet, tile and shower Toilet will be re-installed</i>		
<b>Framing</b>	1 Ea	\$176.51
<i>Materials and Labor to Block as necessary for new installations</i>		

Item	Quantity	Amount
<b>Trim</b>	<b>27 LF</b>	<b>\$342.09</b>
<i>Materials and Labor to instal 3 1/4 inch baseboard to match existing</i>		
<i>Approximately 12 lft</i>		
<b>Drywall</b>		<b>\$633.20</b>
<b>Walls</b>	<b>216 Ea</b>	<b>\$633.20</b>
<i>Materials and Labor to hang and finish drywall on interior basement walls</i>		
<b>Painting</b>		<b>\$958.18</b>
<b>Ceilings</b>	<b>42 SF</b>	<b>\$101.45</b>
<i>Materials and Labor to paint 1 coat primer, 2 coats flat or eggshell wall paint Sherwin Williams Super-paint or Cashmere</i>		
<i>Paint includes light prep, filling of nail holes etc. Actual drywall work could incur additional charges.</i>		
<b>Walls</b>	<b>216 SF</b>	<b>\$492.53</b>
<i>Materials and Labor to paint 1 coat primer, 2 coats flat or eggshell wall paint Sherwin Williams Super-paint or Cashmere</i>		
<i>Paint includes light prep, filling of nail holes etc. Actual drywall work could incur additional charges.</i>		
<b>Trim</b>	<b>65 LF</b>	<b>\$179.40</b>
<i>Materials and Labor to paint Baseboards and Window Casing</i>		
<b>Doors</b>	<b>1 Ea</b>	<b>\$184.80</b>
<i>Materials and Labor to paint Exterior door slab. Sherwin Williams Super Paint or Cashmere</i>		
<b>Flooring</b>		<b>\$1,299.23</b>
<b>Ceramic/Porcelain Floor Tile</b>		<b>\$1,299.23</b>
<b>Floor Preparation</b>	<b>42 SF</b>	<b>\$390.39</b>
<i>Materials and Labor to apply floor leveler/Patch and install Schluter Ditra underlayment. Approximately 42 sqft.</i>		
<b>Bathroom Floor Tile</b>	<b>42 SF</b>	<b>\$829.42</b>
<i>12 x 24 ceramic</i>		
<i>Tile allowance \$6/sqft</i>		
<b>Transition</b>	<b>1 Ea</b>	<b>\$79.42</b>
<i>Materials and Labor to install Marble/quartz in doorway.</i>		
<b>Electrical</b>		<b>\$799.23</b>
<b>Install new vanity light</b>	<b>1 Ea</b>	<b>\$212.26</b>
<b>Electrical, Switches and Receptacles, GFCI receptacle, 15 amps, white</b>	<b>1 Ea</b>	<b>\$203.70</b>
<i>15-amp shock guard ground fault circuit interrupter. Side- and back-wired to accept 12 gauge wire. Shallow design allows for easy installation</i>		

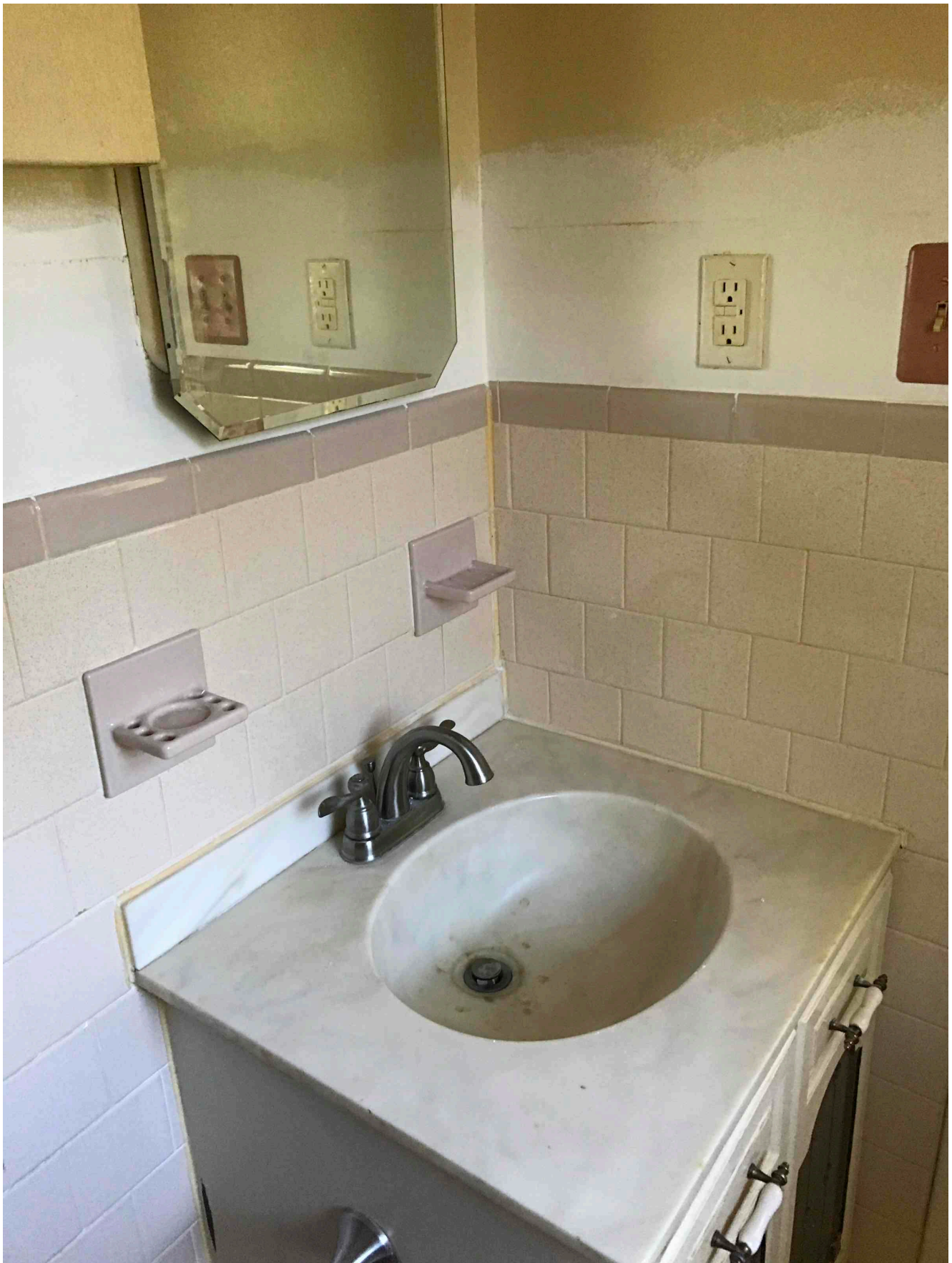
Item	Quantity	Amount
<b>Materials and Labor to replace existing light switches and receptacles and cover plates with new standard white toggle switches and receptacles.</b> <i>Includes outlet or switch and cover only (no wire or box)</i>	2 Ea	\$61.76
<b>Fan Light combo</b> <i>Replace existing fan light</i>	1 Ea	\$321.51
<b>Misc.</b>		<b>\$491.38</b>
<b>Towel Bar, Toilet Paper Holder, Mirror</b>	1 SF	\$319.51
<b>Doors Knobs</b>	1 Ea	\$64.76
<b>Horizontal blinds, 1" wide vinyl</b> <i>Materials and Labor to install horizontal blinds</i>	9 SF	\$76.44
<b>Hardware, Door stops, Wall bumper, 3" long, brass</b> <i>Materials and Labor to install door stops</i>	2 Ea	\$30.67
<b>Optional Hall entrance and bathtub (additional costs)</b>		<b>\$1,523.79</b>
<i>Move door to hallway</i>		
<i>Remove this cost for</i>		
<b>Bathtub</b> <i>Additional cost to replace shower unit with bathtub</i>	1 Ea	\$429.00
<b>Framing</b> <i>Materials and Labor to:</i> <i>-remove door and frame in opening to bedroom</i> <i>-create rough opening for door in hallway</i>	1 SF	\$458.02
<b>Drywall</b> <i>Materials and Labor to hang and finish drywall in old door location</i>	1 SF	\$281.51
<b>Door</b> <i>Materials and Labor to install 24" door to hallway</i>	1 SF	\$355.26
	<b>Price</b>	<b>\$13,839.76</b>





















[Click Here to Return to Table of Contents](#)

# CARS™

## CHRIST-CENTERED ADDICTION RESTORATION SERVICES



### **C.A.R.S. Bath 2**

Mailing Address  
16100 Rogers Road Culpeper Va 22701





CHRIST-CENTERED ADDICTION  
RESTORATION SERVICES

## Estimate

Job Name	C.A.R.S. Bath 2
Job Number	1460 Bath 2
Issue Date	November 17, 2024
Valid Until	December 17, 2024

Item	Quantity	Amount
<b>Bath 2</b>		<b>\$6,843.57</b>
<i>See attached sketch</i>		
<b>Bathtub</b>		<b>\$2,813.03</b>
Replace existing cast iron bathtub with new tub and surround	1 Ea	\$2,813.03
<b>Plumbing</b>		<b>\$869.72</b>
<b>Vanity and Top</b>	1 Ea	\$533.67
<i>Colorado style. Fully assembled. Faucet sold separately. 31" high. Oak finish. Labor cost includes setting in place only</i>		
Vanity faucet	1 SF	\$336.05
<b>Flooring</b>		<b>\$1,299.23</b>
<b>Ceramic/Porcelain Floor Tile</b>		<b>\$1,299.23</b>
<b>Floor Preparation</b>	42 SF	\$390.39
<i>Materials and Labor to apply floor leveler/Patch and install Schluter Ditra underlayment. Approximately 42 sqft.</i>		
<b>Bathroom Floor Tile</b>	42 SF	\$829.42
<i>12 x 24 ceramic</i>		
<i>Tile allowance \$6/sqft</i>		
<b>Transition</b>	1 Ea	\$79.42
<i>Materials and Labor to install Marble/quartz in doorway.</i>		
<b>Painting</b>		<b>\$827.45</b>
<b>Ceilings</b>	40 SF	\$96.61
<i>Materials and Labor to paint 1 coat primer, 2 coats flat or eggshell wall paint Sherwin Williams Super-paint or Cashmere</i>		

Item	Quantity	Amount
<i>Paint includes light prep, filling of nail holes etc. Actual drywall work could incur additional charges.</i>		
<b>Walls</b>	<b>208 SF</b>	<b>\$474.28</b>
<i>Materials and Labor to paint 1 coat primer, 2 coats flat or eggshell wall paint Sherwin Williams Super-paint or Cashmere</i>		
<i>Paint includes light prep, filling of nail holes etc. Actual drywall work could incur additional charges.</i>		
<b>Trim</b>	<b>26 LF</b>	<b>\$71.76</b>
<i>Materials and Labor to paint Baseboards and Window Casing</i>		
<b>Doors</b>	<b>1 Ea</b>	<b>\$184.80</b>
<i>Materials and Labor to paint Exterior door slab. Sherwin Williams Super Paint or Cashmere</i>		
<b>Electrical</b>		<b>\$749.94</b>
<b>Fan Light combo</b>	<b>1 Ea</b>	<b>\$321.51</b>
<i>Replace existing fan light</i>		
<b>Materials and Labor to replace existing light switches and receptacles and cover plates with new standard white toggle switches and receptacles.</b>	<b>7 Ea</b>	<b>\$216.17</b>
<i>Includes outlet or switch and cover only (no wire or box)</i>		
<b>Install new vanity light</b>	<b>1 Ea</b>	<b>\$212.26</b>
<b>Misc.</b>		<b>\$284.20</b>
<b>Bathroom Mirror</b>	<b>1 Ea</b>	<b>\$124.00</b>
<b>Doors Knobs</b>	<b>2 Ea</b>	<b>\$129.53</b>
<b>Hardware, Door stops, Wall bumper, 3" long, brass</b>	<b>2 Ea</b>	<b>\$30.67</b>
<i>Materials and Labor to install door stops</i>		
<b>Price</b>		<b>\$6,843.57</b>





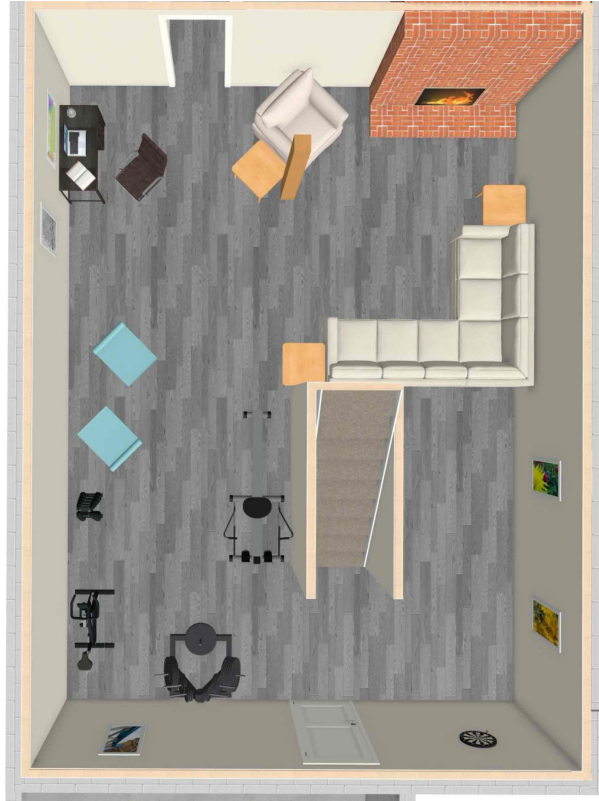




[Click Here to Return to Table of Contents](#)

# CARS™

## CHRIST-CENTERED ADDICTION RESTORATION SERVICES



**C.A.R.S. Basement Main Room**

Mailing Address  
16100 Rogers Road Culpeper Va 22701



CHRIST-CENTERED ADDICTION  
RESTORATION SERVICES

## Estimate

Job Name	C.A.R.S. Basement Main Room
Job Number	1460 Basement Main Room
Issue Date	November 17, 2024
Valid Until	December 17, 2024

Item	Quantity	Amount
<b>Main Area</b>		<b>\$15,603.38</b>
<i>No use established yet</i>		
<b>Demolition</b>		<b>\$315.02</b>
<b>Ceiling</b>	<b>1 SF</b>	<b>\$315.02</b>
<i>Materials and Labor to remove existing acoustic ceiling</i>		
<b>Drywall</b>		<b>\$2,049.37</b>
<b>Gypsum Drywall and Accessories, Gypsum drywall and accessories - lightweight board, 1/2"</b>	<b>23 Ea</b>	<b>\$2,049.37</b>
<i>Materials and Labor to drywall ceiling</i>		
<b>Painting</b>		<b>\$4,461.40</b>
<b>Ceilings</b>	<b>647 SF</b>	<b>\$1,562.68</b>
<i>Materials and Labor to paint 1 coat primer, 2 coats flat or eggshell wall paint Sherwin Williams Super-paint or Cashmere</i>		
<i>Paint includes light prep, filling of nail holes etc. Actual drywall work could incur additional charges.</i>		
<b>Walls</b>	<b>1,028 SF</b>	<b>\$2,344.10</b>
<i>Materials and Labor to paint 1 coat primer, 2 coats flat or eggshell wall paint Sherwin Williams Super-paint or Cashmere</i>		
<i>Paint includes light prep, filling of nail holes etc. Actual drywall work could incur additional charges.</i>		
<b>Trim</b>	<b>134 LF</b>	<b>\$369.82</b>
<i>Materials and Labor to paint Baseboards and Window Casing</i>		
<b>Doors</b>	<b>1 Ea</b>	<b>\$184.80</b>
<i>Materials and Labor to paint Exterior door slab. Sherwin Williams Super Paint or Cashmere</i>		



Item	Quantity	Amount
<b>Flooring</b>		<b>\$6,876.53</b>
<b>Underlayment</b> <i>6 mil plastic</i>	647 SF	\$407.09
<b>Luxury Vinyl Plank Flooring</b> <i>Materials and Labor to install Luxury Vinyl Plank flooring.</i> <i>Flooring allowance \$4.00/ sqft</i> <i>Flooring is figured at a 10% waste and will be calculated to the nearest full box.</i> <i>Some floorings will require underlayment. Additional charges will apply to install underlayment.</i>	654 SF	\$5,938.65
<b>Materials and Labor to install and paint shoe molding</b> <i>Labor costs here can also be used for hardwood moldings in the previous section</i>	134 LF	\$530.79
<b>Electrical/Plumbing</b>		<b>\$1,740.86</b>
<b>Water Supply</b> <i>Replace corroded copper lines with pex piping from utility room to kitchen</i>	1 SF	\$634.51
<b>Flush mount light</b> <i>Allowance to install 4 flush mount led lights</i>	4 Ea	\$612.26
<b>Materials and Labor to replace existing light switches and receptacles and cover plates with new standard white toggle switches and receptacles.</b> <i>Includes outlet or switch and cover only (no wire or box)</i>	16 Ea	\$494.09
<b>Misc.</b>		<b>\$160.20</b>
<b>Doors Knobs</b>	2 Ea	\$129.53
<b>Hardware, Door stops, Wall bumper, 3" long, brass</b> <i>Materials and Labor to install door stops</i>	2 Ea	\$30.67
	<b>Price</b>	<b>\$15,603.38</b>













[Click Here to Return to Table of Contents](#)

# CARS™

CHRIST-CENTERED ADDICTION  
RESTORATION SERVICES



**C.A.R.S Kitchen**

Mailing Address  
16100 Rogers Road Culpeper Va 22701





CHRIST-CENTERED ADDICTION  
RESTORATION SERVICES

## Estimate

Job Name	C.A.R.S Kitchen
Job Number	1460 Kitchen
Issue Date	November 3, 2024
Valid Until	December 3, 2024

Item	Quantity	Amount
<b>Kitchen Complete Remodel</b>		<b>\$29,375.19</b>
<i>See attached sketch Kitchen re-arranged to make more functional and accessible.</i>		
<b>Framing Kitchen</b>		<b>\$465.98</b>
<b>framing</b>	<b>1 Ea</b>	<b>\$465.98</b>
<i>Remove and dispose of 24" door Frame for drywall Make rough opening for new 18" closet door  See sketch</i>		
<b>Doors</b>		<b>\$285.66</b>
<b>Pantry Door</b>	<b>1 SF</b>	<b>\$285.66</b>
<i>Materials and Labor to install 18" closet/Pantry door</i>		
<b>Counter top and Backsplash</b>		<b>\$7,108.46</b>
<b>Demolition Counter Top</b>	<b>28 SF</b>	<b>\$123.72</b>
<i>Materials and Labor to remove existing formica countertop and haul outside to dumpster</i>		
<b>Demolition Backsplash</b>	<b>1 SF</b>	<b>\$210.01</b>
<i>Materials and Labor to remove existing backsplash and backer board and haul outside to dumpster</i>		
<b>1 1/4" Granite</b>	<b>46 SF</b>	<b>\$4,964.42</b>
<i>Materials and Labor to install granite counter top</i>		
<b>Backsplash</b>	<b>1 Ea</b>	<b>\$1,810.31</b>
<i>Materials and Labor to install Ceramic backsplash Approximately 20 sqft</i>		

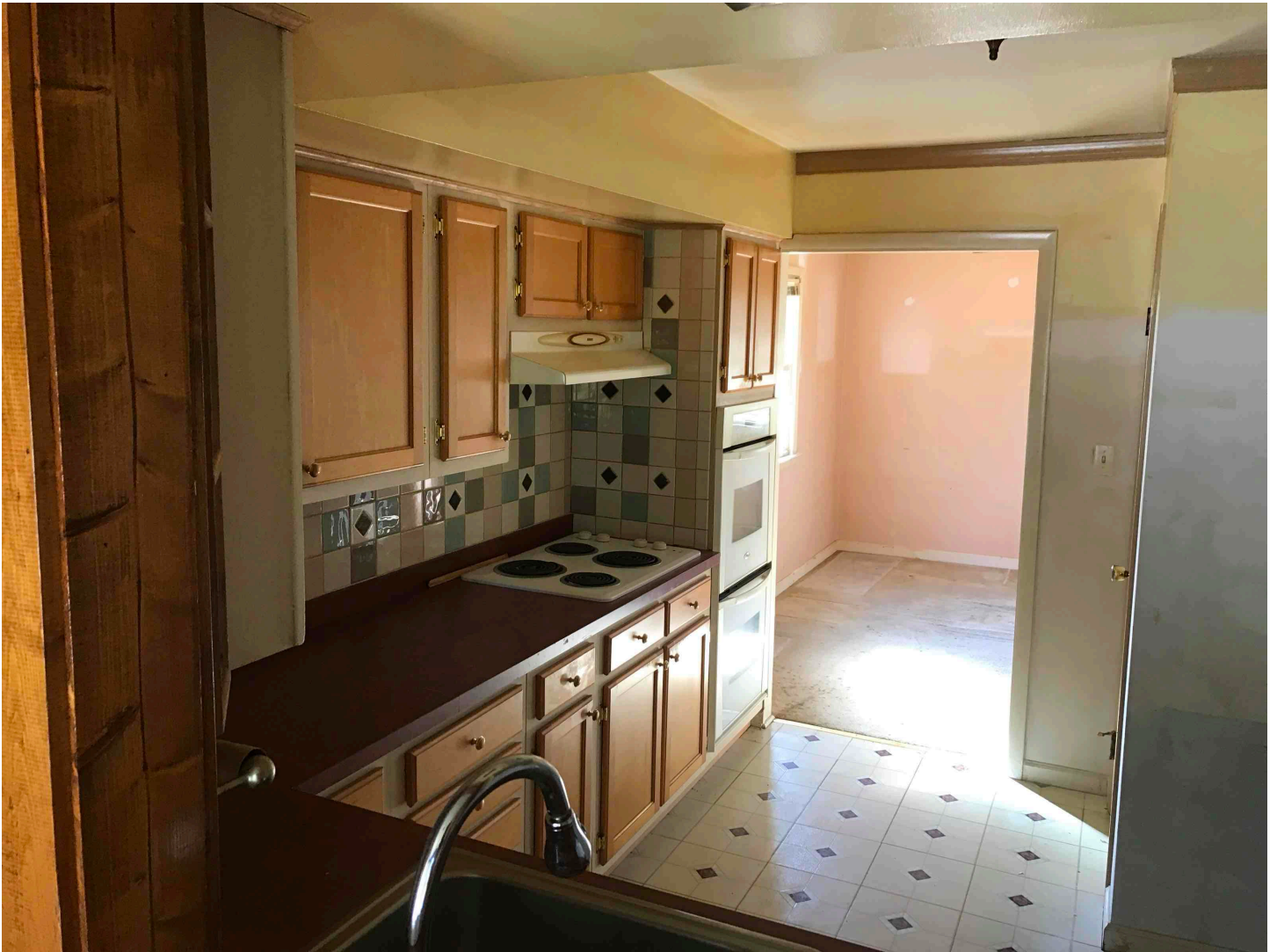
Item	Quantity	Amount
<b>Base Cabinets</b>		<b>\$4,922.93</b>
<i>Forevermark</i>		
<b>Cabinet Demolition</b>	13 LF	\$287.58
<i>Materials and Labor to remove existing cabinets and haul outside to dumpster</i>		
<b>36" sink base</b>	1 Ea	\$595.99
<b>12" base</b>	1 Ea	\$342.78
<b>24" Base</b>	1 SF	\$407.13
<b>18" drawer base</b>	1 Ea	\$545.91
<b>15" base</b>	1 Ea	\$344.12
<b>36" corner</b>	2 Ea	\$1,544.97
<i>Pre-assembled. 3/4"-thick medium-density fiberboard. Door face and drawer fronts vacuum-formed with white thermofoil. Door back is white melamine laminate. 34-1/2" high x 24" deep. With hardware</i>		
<b>Toe Kick</b>	3 Ea	\$293.49
<b>Base filler</b>	2 Ea	\$140.95
<b>Assembly</b>	8 Ea	\$420.01
<b>Wall Cabinets</b>		<b>\$6,543.66</b>
<i>Forevermark</i>		
<b>Cabinet Demolition</b>	1 LF	\$875.79
<i>Materials and Labor to remove Bulkhead and existing cabinets and haul outside to dumpster</i>		
<b>24"x42" angled corner</b>	2 Ea	\$1,060.96
<i>Pre-assembled. 3/4"-thick medium-density fiberboard. Door face vacuum formed with white thermofoil. Door back is white melamine laminate. 12" deep. With hardware</i>		
<b>24" x 42</b>	1 SF	\$328.48
<b>12"x42"</b>	5 Ea	\$1,256.68
<b>15"x42"</b>	1 Ea	\$314.92
<b>30x30x12</b>	1 SF	\$342.78
<b>36"x24"</b>	1 Ea	\$416.29
<b>18x42</b>	1 SF	\$342.78
<b>36x24x24</b>	1 Ea	\$502.94
<b>Crown Molding</b>	3 Ea	\$472.00
<b>Assembly</b>	12 Ea	\$630.04
<b>Drywall</b>		<b>\$508.07</b>
<b>New Drywall</b>	1 SF	\$169.36
<i>Materials and Labor to hang and finish drywall at old door opening Approximately 27 sqft</i>		

Item	Quantity	Amount
<b>Drywall</b> <i>Materials and Labor to hang and finish drywall at backsplash area Approximately 20 sqft</i>	1 SF	\$338.71
<b>Painting</b>		<b>\$1,037.98</b>
<b>Ceilings</b> <i>Materials and Labor to paint 1 coat primer, 2 coats flat or eggshell wall paint Sherwin Williams Super-paint or Cashmere Paint includes light prep, filling of nail holes etc. Actual drywall work could incur additional charges.</i>	120 SF	\$289.83
<b>Walls</b> <i>Materials and Labor to paint 1 coat primer, 2 coats flat or eggshell wall paint Sherwin Williams Super-paint or Cashmere Paint includes light prep, filling of nail holes etc. Actual drywall work could incur additional charges.</i>	224 SF	\$510.79
<b>Trim</b> <i>Materials and Labor to paint Baseboards and Window Casing</i>	86 LF	\$237.36
<b>Flooring</b>		<b>\$1,164.36</b>
<b>Luxury Vinyl Plank Flooring</b> <i>Materials and Labor to install Luxury Vinyl Plank flooring. Flooring installed over sheet vinyl Flooring allowance \$4.00/ sqft Flooring is figured at a 10% waste and will be calculated to the nearest full box. Some floorings will require underlayment. Additional charges will apply to install underlayment.</i>	99 SF	\$898.96
<b>Materials and Labor to install and paint shoe molding</b> <i>Labor costs here can also be used for hardwood moldings in the previous section</i>	67 LF	\$265.40
<b>Electrical</b>		<b>\$1,375.76</b>
<b>Light over kitchen sink</b> <i>Install ceiling light or pendant over kitchen sink Materials and Labor to run electrical and install lights</i>	1 SF	\$529.52
<b>Plug for Midrowave</b> <i>Dedicated plug for over the range microwave and ventless fan</i>	1 SF	\$458.02
<b>GFCI receptacle, 15 amps, white</b> <i>15-amp shock guard ground fault circuit interrupter. Side- and back-wired to accept 12 gauge wire. Shallow design allows for easy installation</i>	3 Ea	\$217.33
<b>Flush mount light</b> <i>7-3/8" diameter x 4-1/2" high. Uses one medium base bulb, 60-watt maximum (not included)</i>	1 Ea	\$109.13
<b>Materials and Labor to replace existing light switches and receptacles and cover plates with new standard white toggle switches and receptacles.</b> <i>Includes outlet or switch and cover only (no wire or box)</i>	2 Ea	\$61.76

Item	Quantity	Amount
<b>Appliances (Major)</b>		<b>\$4,953.37</b>
<b>Refrigerator 36"</b> <i>Whirlpool 24.6-cu ft Side-by-Side Refrigerator with Ice Maker, Water and Ice Dispenser (Fingerprint Resistant Stainless Steel)</i> Item #1030901   Model #WRS315SDHZ	1 SF	\$3,353.15
<b>GE Dry Boost 24-in Front Control Built-In Dishwasher (Stainless Steel)</b> <b>ENERGY STAR, 55-dBA Standard Sound Level</b> Item #3566199   Model #GDF535PSRSS	1 Ea	\$735.83
<b>Kitchens, Stainless Steel Sinks, 8" deep, double bowl</b> <i>Kraus Premier Undermount 32.25-in x 18-in Stainless Steel Double Equal Bowl Kitchen Sink</i> Item #2844942   Model #KBU22	1 Ea	\$431.91
<b>Over Range Microwave</b> <i>GE 1.6-cu ft 1000-Watt 29.875-in Over-the-Range Microwave (Stainless Steel)</i> Item #520293   Model #JVM3160RFSS	1 SF	\$432.48
<b>Misc.</b>		<b>\$1,008.96</b>
<b>Fire Extinguisher</b> <i>Walmart</i> <i>Kidde Multipurpose Home Fire Extinguisher, UL Rated 1-A:10-B:C, Model KD82-110ABC</i>	1 SF	\$22.84
<b>Shelving for Pantry</b> <i>5 shelves with roll out drawers</i>	5 SF	\$906.03
<b>Hardware, Door stops, Wall bumper, 3" long, brass</b> <i>Materials and Labor to install door stops</i>	1 Ea	\$15.33
<b>Doors Knobs</b>	1 Ea	\$64.76
<b>Things to consider</b>		<b>\$0.00</b>
<b>additional lighting</b>	1 SF	\$0.00
<b>small appliances</b>	1 SF	\$0.00
<b>Price</b>		<b>\$29,375.19</b>

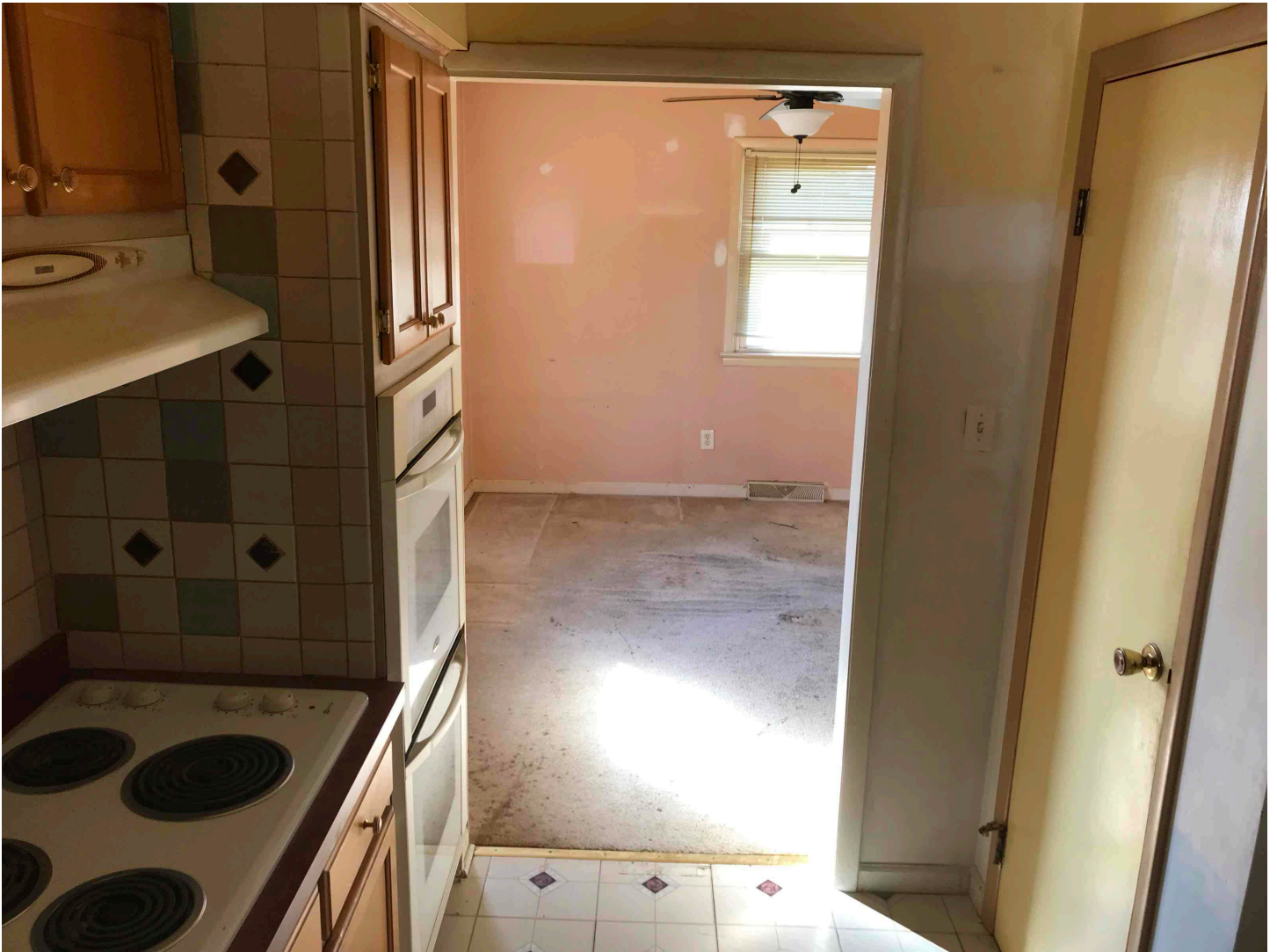












[Click Here to Return to Table of Contents](#)

# CARS™

## CHRIST-CENTERED ADDICTION RESTORATION SERVICES



### **C.A.R.S. Great Room**

Mailing Address  
16100 Rogers Road Culpeper Va 22701



CHRIST-CENTERED ADDICTION  
RESTORATION SERVICES

## Estimate

Job Name	C.A.R.S. Great Room
Job Number	1460 Great Room
Issue Date	November 17, 2024
Valid Until	December 17, 2024

Item	Quantity	Amount
<b>Great Room</b>		<b>\$6,079.05</b>
<b>Painting</b>		<b>\$2,076.89</b>
<b>Ceilings</b>	<b>216 SF</b>	<b>\$521.70</b>
<i>Materials and Labor to paint 1 coat primer, 2 coats flat or eggshell wall paint Sherwin Williams Super-paint or Cashmere</i>		
<i>Paint includes light prep, filling of nail holes etc. Actual drywall work could incur additional charges.</i>		
<b>Walls</b>	<b>486 SF</b>	<b>\$1,108.21</b>
<i>Materials and Labor to paint 1 coat primer, 2 coats flat or eggshell wall paint Sherwin Williams Super-paint or Cashmere</i>		
<i>Paint includes light prep, filling of nail holes etc. Actual drywall work could incur additional charges.</i>		
<b>Trim</b>	<b>95 LF</b>	<b>\$262.18</b>
<i>Materials and Labor to paint Baseboards and Window Casing</i>		
<b>Doors</b>	<b>1 Ea</b>	<b>\$184.80</b>
<i>Materials and Labor to paint Exterior door slab. Sherwin Williams Super Paint or Cashmere</i>		
<b>Electrical</b>		<b>\$953.46</b>
<b>Lighting</b>	<b>3 Ea</b>	<b>\$737.29</b>
<i>Install 3 - ceiling lights</i>		
<b>Materials and Labor to replace existing light switches and receptacles and cover plates with new standard white toggle switches and receptacles.</b>	<b>7 Ea</b>	<b>\$216.17</b>
<i>Includes outlet or switch and cover only (no wire or box)</i>		
<b>Flooring</b>		<b>\$2,605.18</b>
<b>Remove Existing Carpet</b>	<b>216 SF</b>	<b>\$226.81</b>
<i>Materials and Labor to remove existing carpet, padding and tacks and put in dumpster.</i>		
<i>Price does not include removal or repair of any additional underlayment or any other condition that prevents the installation of LVP flooring</i>		

Item	Quantity	Amount
<b>Luxury Vinyl Plank Flooring</b>	<b>238 SF</b>	<b>\$2,161.16</b>
<i>Materials and Labor to install Luxury Vinyl Plank flooring.</i>		
<i>Flooring allowance \$4.00/ sqft</i>		
<i>Flooring is figured at a 10% waste and will be calculated to the nearest full box.</i>		
<i>Some floorings will require underlayment. Additional charges will apply to install underlayment.</i>		
<b>Materials and Labor to install and paint shoe molding</b>	<b>61 LF</b>	<b>\$217.21</b>
<i>Labor costs here can also be used for hardwood moldings in the previous section</i>		
<b>Misc.</b>		<b>\$443.52</b>
<b>Hardware, Door stops, Wall bumper, 3" long, brass</b>	<b>1 Ea</b>	<b>\$15.33</b>
<i>Materials and Labor to install door stops</i>		
<b>Hardware, Keyed entry locksets</b>	<b>1 Ea</b>	<b>\$62.39</b>
<i>Materials and Labor to install front entry locking door knob.</i>		
<b>Hardware, Deadbolts, Double cylinder</b>	<b>1 Ea</b>	<b>\$110.98</b>
<i>Materials and Labor to install Front entry door deadbolt</i>		
<b>Horizontal blinds, 1" wide vinyl</b>	<b>30 SF</b>	<b>\$254.82</b>
<i>Blinds and shades.</i>		
<b>Price</b>		<b>\$6,079.05</b>

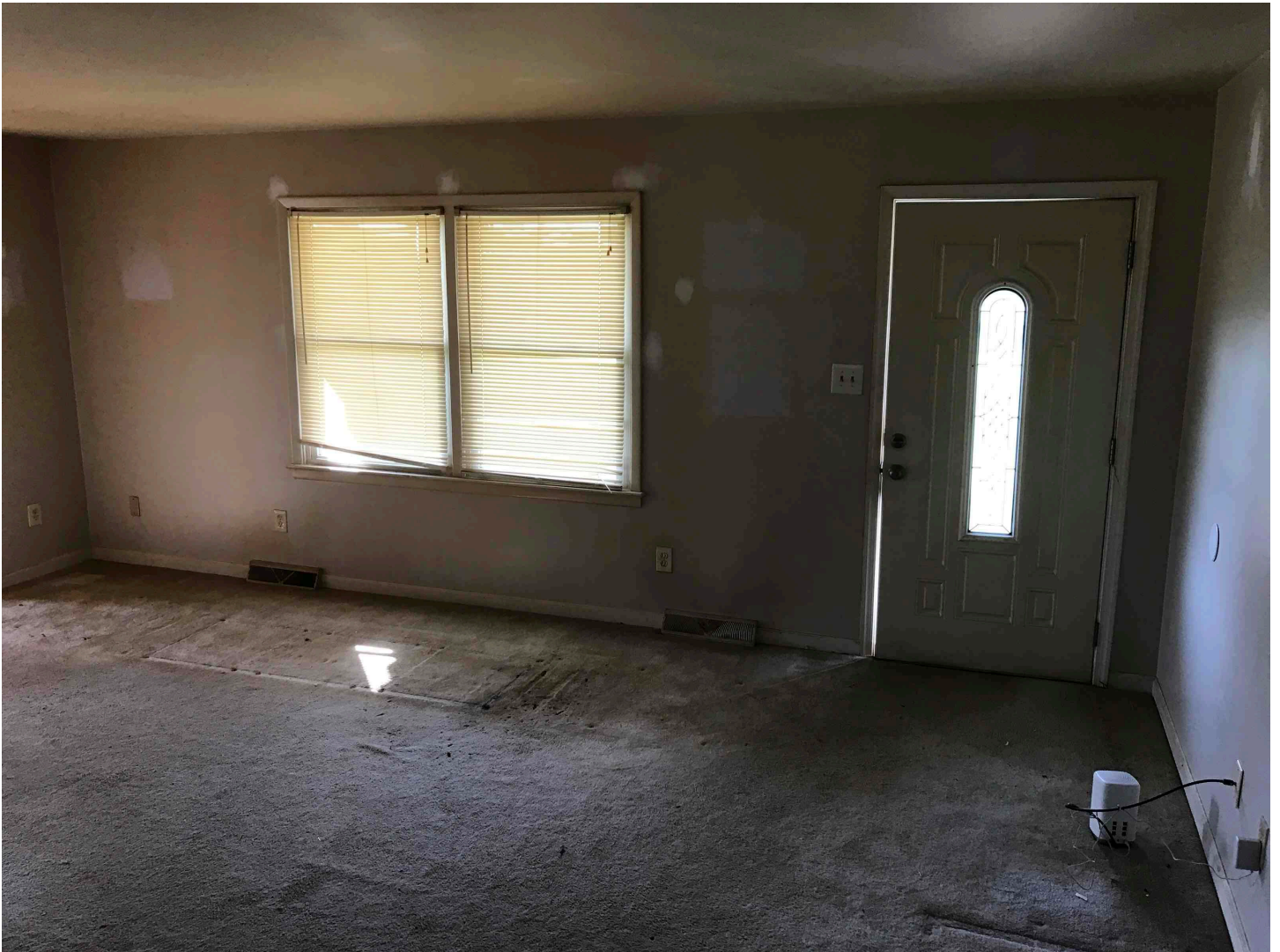












[Click Here to Return to Table of Contents](#)

# CARS™

CHRIST-CENTERED ADDICTION  
RESTORATION SERVICES



## C.A.R.S. Hall and Stairs

Mailing Address  
16100 Rogers Road Culpeper Va 22701



CHRIST-CENTERED ADDICTION  
RESTORATION SERVICES

## Estimate

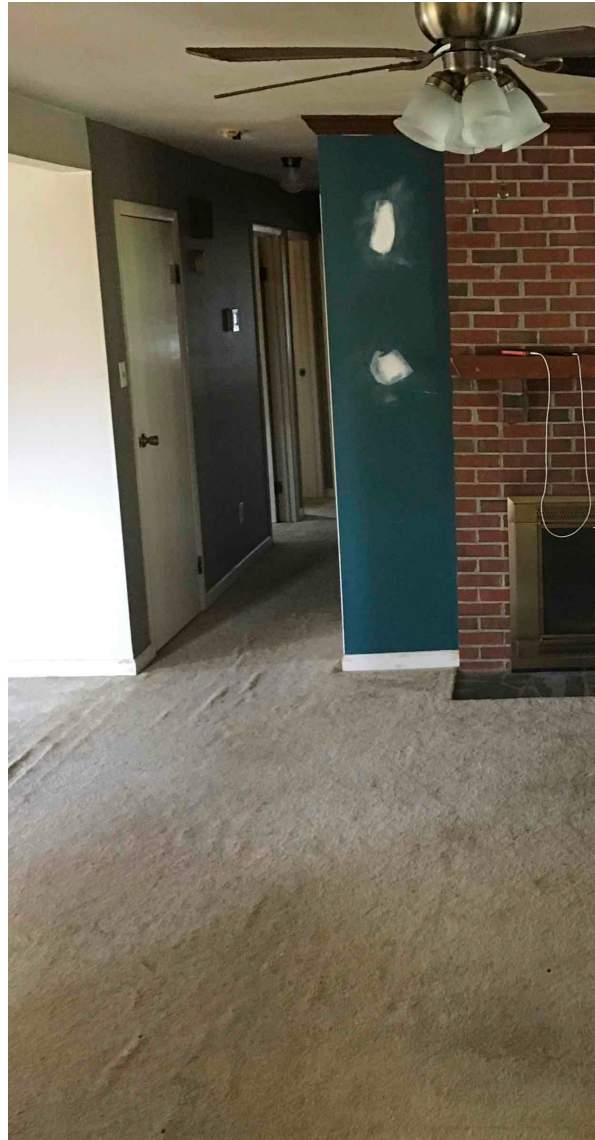
Job Name	C.A.R.S. Hall and Stairs
Job Number	1460 hall
Issue Date	November 17, 2024
Valid Until	December 17, 2024

Item	Quantity	Amount
<b>Hall Main Floor/ 2 closets</b>		<b>\$3,707.60</b>
<b>HVAC</b>		<b>\$852.50</b>
<b>Drywall</b> <i>Repair drywall from hvac return modifications</i>	1 SF	\$251.48
<b>Return</b> <i>Modify Return to fit in the width of wall cavity</i>	1 SF	\$601.02
<b>Painting</b>		<b>\$1,659.95</b>
<b>Ceilings</b> <i>Materials and Labor to paint 1 coat primer, 2 coats flat or eggshell wall paint Sherwin Williams Super-paint or Cashmere</i> <i>Paint includes light prep, filling of nail holes etc. Actual drywall work could incur additional charges.</i>	56 SF	\$135.25
<b>Walls</b> <i>Materials and Labor to paint 1 coat primer, 2 coats flat or eggshell wall paint Sherwin Williams Super-paint or Cashmere</i> <i>Paint includes light prep, filling of nail holes etc. Actual drywall work could incur additional charges.</i>	440 SF	\$1,003.31
<b>Trim</b> <i>Materials and Labor to paint Baseboards and Window Casing</i>	55 LF	\$151.79
<b>Doors</b> <i>Materials and Labor to paint Exterior door slab. Sherwin Williams Super Paint or Cashmere</i>	2 Ea	\$369.60
<b>Electrical</b>		<b>\$232.66</b>
<b>Materials and Labor to replace existing light switches and receptacles and cover plates with new standard white toggle switches and receptacles.</b> <i>Includes outlet or switch and cover only (no wire or box)</i>	4 Ea	\$123.53
<b>Flush mount light</b> <i>7-3/8" diameter x 4-1/2" high. Uses one medium base bulb, 60-watt maximum (not included)</i>	1 Ea	\$109.13

Item	Quantity	Amount
<b>Flooring</b>		<b>\$817.63</b>
<b>Remove Existing Carpet</b>	<b>56 SF</b>	<b>\$58.80</b>
<i>Materials and Labor to remove existing carpet, padding and tacks and put in dumpster.</i>		
<i>Price does not include removal or repair of any additional underlayment or any other condition that prevents the installation of LVP flooring</i>		
<b>Luxury Vinyl Plank Flooring</b>	<b>62 SF</b>	<b>\$562.99</b>
<i>Materials and Labor to install Luxury Vinyl Plank flooring.</i>		
<i>Flooring allowance \$4.00/ sqft</i>		
<i>Flooring is figured at a 10% waste and will be calculated to the nearest full box.</i>		
<i>Some floorings will require underlayment. Additional charges will apply to install underlayment.</i>		
<b>Materials and Labor to install and paint shoe molding</b>	<b>55 LF</b>	<b>\$195.84</b>
<i>Labor costs here can also be used for hardwood moldings in the previous section</i>		
<b>Misc.</b>		<b>\$144.86</b>
<b>Hardware, Door stops, Wall bumper, 3" long, brass</b>	<b>1 Ea</b>	<b>\$15.33</b>
<i>Materials and Labor to install door stops</i>		
<b>Doors Knobs</b>	<b>2 Ea</b>	<b>\$129.53</b>
<b>Stairs</b>		<b>\$1,423.27</b>
<b>Demolition</b>	<b>1 Ea</b>	<b>\$210.01</b>
<i>Remove existing carpet on stairs</i>		
<b>Carpet</b>	<b>1 Ea</b>	<b>\$1,001.00</b>
<i>Materials and Labor to install new carpeting on stairwell</i>		
<b>Lighting</b>	<b>1 SF</b>	<b>\$212.26</b>
<i>Replace existing light with L.E.D. light fixture</i>		
<b>Price</b>		<b>\$5,130.87</b>







[Click Here to Return to Table of Contents](#)

# CARS™

## CHRIST-CENTERED ADDICTION RESTORATION SERVICES



**C.A.R.S. Sunroom**

Mailing Address  
16100 Rogers Road Culpeper Va 22701





CHRIST-CENTERED ADDICTION  
RESTORATION SERVICES

### Estimate

Job Name	C.A.R.S. Sunroom
Job Number	1460 Sunroom
Issue Date	November 17, 2024
Valid Until	December 17, 2024

Item	Quantity	Amount
<b>Sunroom</b>		<b>\$13,886.53</b>
<i>Includes utility area</i>		
<b>Utility Area</b>		<b>\$1,164.03</b>
<b>Remove wall in sunroom at utility area</b>	<b>1 SF</b>	<b>\$634.51</b>
<i>Approximately 7 lft</i>		
<b>Basement utility room</b>	<b>1 SF</b>	<b>\$529.52</b>
<i>Rework pumping and electrical to allow for washer and dryer to be moved in basement</i>		
<b>Ceiling</b>		<b>\$1,506.81</b>
<b>Demolition</b>	<b>306 SF</b>	<b>\$437.58</b>
<i>Materials and Labor to remove existing ceiling paneling</i>		
<b>Gypsum Drywall and Accessories, Gypsum drywall and accessories - lightweight board, 1/2"</b>	<b>12 Ea</b>	<b>\$1,069.23</b>
<i>Labor costs are for good quality hanging and taping with smooth sanded joints</i>		
<b>Painting</b>		<b>\$3,266.10</b>
<i>Includes Utility Area</i>		
<b>Ceilings</b>	<b>278 SF</b>	<b>\$671.43</b>
<i>Materials and Labor to paint 1 coat primer, 2 coats flat or eggshell wall paint Sherwin Williams Super-paint or Cashmere</i>		
<i>Paint includes light prep, filling of nail holes etc. Actual drywall work could incur additional charges.</i>		
<b>Walls</b>	<b>360 SF</b>	<b>\$820.88</b>
<i>Materials and Labor to paint 1 coat primer, 2 coats flat or eggshell wall paint Sherwin Williams Super-paint or Cashmere</i>		
<i>Paint includes light prep, filling of nail holes etc. Actual drywall work could incur additional charges.</i>		
<b>Trim</b>	<b>264 LF</b>	<b>\$1,219.39</b>
<i>Materials and Labor to paint Baseboards and Window Casing</i>		

Item	Quantity	Amount
<b>Doors</b>	<b>3 Ea</b>	<b>\$554.40</b>
<i>Materials and Labor to paint Exterior door slab. Sherwin Williams Super Paint or Cashmere</i>		
<b>Flooring</b>		<b>\$4,576.06</b>
<b>Subfloor</b>	<b>306 SF</b>	<b>\$1,072.07</b>
<i>Materials and Labor to raise floor approximately 1" to same level as the den</i>		
<i>2 layers of 1/2 inch</i>		
<b>Remove Existing Carpet</b>	<b>306 SF</b>	<b>\$321.32</b>
<i>Materials and Labor to remove existing carpet, padding and tacks and put in dumpster.</i>		
<i>Price does not include removal or repair of any additional underlayment or any other condition that prevents the installation of LVP flooring</i>		
<b>Luxury Vinyl Plank Flooring</b>	<b>306 SF</b>	<b>\$2,778.63</b>
<i>Materials and Labor to install Luxury Vinyl Plank flooring.</i>		
<i>Flooring allowance \$4.00/ sqft</i>		
<i>Flooring is figured at a 10% waste and will be calculated to the nearest full box.</i>		
<i>Some floorings will require underlayment. Additional charges will apply to install underlayment.</i>		
<b>Materials and Labor to install and paint shoe molding</b>	<b>102 LF</b>	<b>\$404.04</b>
<i>Labor costs here can also be used for hardwood moldings in the previous section</i>		
<b>Electrical</b>		<b>\$928.92</b>
<b>Additional Lighting</b>	<b>2 SF</b>	<b>\$634.51</b>
<i>Install 2 new ceiling lights</i>		
<b>Flush mount light</b>	<b>1 Ea</b>	<b>\$109.13</b>
<i>7-3/8" diameter x 4-1/2" high. Uses one medium base bulb, 60-watt maximum (not included)</i>		
<b>Materials and Labor to replace existing light switches and receptacles and cover plates with new standard white toggle switches and receptacles.</b>	<b>6 Ea</b>	<b>\$185.28</b>
<i>Includes outlet or switch and cover only (no wire or box)</i>		
<b>Misc.</b>		<b>\$2,444.61</b>
<b>Doors Knobs</b>	<b>3 Ea</b>	<b>\$194.29</b>
<b>Hardware, Door stops, Wall bumper, 3" long, brass</b>	<b>2 Ea</b>	<b>\$30.67</b>
<i>Materials and Labor to install door stops</i>		
<b>Horizontal blinds, 1" wide vinyl</b>	<b>195 SF</b>	<b>\$2,219.65</b>
<i>Materials and Labor to install horizontal blinds Faux wood</i>		
<b>Price</b>		<b>\$13,886.53</b>













[Click Here to Return to Table of Contents](#)



# CARS™

## CHRIST-CENTERED ADDICTION RESTORATION SERVICES



### **C.A.R.S. Basement Bath, Hall, and Utility Closet**

Mailing Address  
16100 Rogers Road Culpeper Va 22701



CHRIST-CENTERED ADDICTION  
RESTORATION SERVICES

## Estimate

Job Name	C.A.R.S. Basement Bath, Hall, and Utility Closet
Job Number	1460 Basement Bath and Hall
Issue Date	November 18, 2024
Valid Until	December 18, 2024

Item	Quantity	Amount
<b>Bathroom</b>		<b>\$16,232.67</b>
<b>Plumbing</b>		<b>\$7,506.88</b>
<b>Concrete</b>	<b>1 SF</b>	<b>\$911.54</b>
<i>Cut and remove enough concrete to set ejector pit and run lines in new bathroom then re-install concrete after plumbing rough in</i>		
<i>Approximately 20 lft x 1 foot wide</i>		
<b>Sewage ejector packaged systems, Simplex sewage ejector, 1/2 HP, 2" line, 20" x 30" tank</b>	<b>1 Ea</b>	<b>\$1,664.59</b>
<i>With vertical pumps, float switch controls, poly tank, cover and fittings, no electrical work or pipe connections included</i>		
<b>Rough in</b>	<b>1 Ea</b>	<b>\$2,502.50</b>
<i>Allowance to re-work plumbing supply and drain to work with new layout</i>		
<b>Shower faucet</b>	<b>1 SF</b>	<b>\$639.01</b>
<i>Moen pose-temp and trim</i>		
<b>Vanity and Top</b>	<b>1 Ea</b>	<b>\$533.67</b>
<i>Colorado style. Fully assembled. Faucet sold separately. 31" high. Oak finish. Labor cost includes setting in place only</i>		
<b>Vanity faucet</b>	<b>1 SF</b>	<b>\$336.05</b>
<b>Water closets, Floor-mount tank type water closet and trim</b>	<b>1 Ea</b>	<b>\$919.52</b>
<b>Shower</b>		<b>\$3,360.58</b>
<b>Acrylic shower stalls, Fiberglass 48" x 36</b>	<b>1 Ea</b>	<b>\$3,360.58</b>
<b>Carpentry</b>		<b>\$1,160.22</b>
<b>Demolition</b>	<b>1 SF</b>	<b>\$386.47</b>
<i>Materials and Labor to remove existing closet walls</i>		

Item	Quantity	Amount
<b>Framing</b>	<b>1 Ea</b>	<b>\$431.66</b>
<i>Materials and Labor to frame for new wall location and create small utility room for ejector pump, water softener and pressure tank. Approximately 22 ft.</i>		
<b>Trim</b>	<b>27 LF</b>	<b>\$342.09</b>
<i>Materials and Labor to instal 3 1/4 inch baseboard to match existing</i>		
<i>Approximately 12 ft</i>		
<b>Drywall</b>		<b>\$891.03</b>
<b>Gypsum Drywall and Accessories, Gypsum drywall and accessories - lightweight board, 1/2"</b>	<b>10 Ea</b>	<b>\$891.03</b>
<i>Labor costs are for good quality hanging and taping with smooth sanded joints (Level 4) and include 6% waste but no texturing. See texturing costs below. Installed costs include premixed joint compound, (5 gallons per 1,000 SF), 2" perforated joint tape (380 LF per 1,000 SF) and drywall screws (4-1/2 pounds per 1,000 SF) at the following material prices. Ea = 1 sheet</i>		
<b>Painting</b>		<b>\$903.48</b>
<b>Ceilings</b>	<b>42 SF</b>	<b>\$101.45</b>
<i>Materials and Labor to paint 1 coat primer, 2 coats flat or eggshell wall paint Sherwin Williams Super-paint or Cashmere</i>		
<i>Paint includes light prep, filling of nail holes etc. Actual drywall work could incur additional charges.</i>		
<b>Walls</b>	<b>192 SF</b>	<b>\$437.83</b>
<i>Materials and Labor to paint 1 coat primer, 2 coats flat or eggshell wall paint Sherwin Williams Super-paint or Cashmere</i>		
<i>Paint includes light prep, filling of nail holes etc. Actual drywall work could incur additional charges.</i>		
<b>Trim</b>	<b>65 LF</b>	<b>\$179.40</b>
<i>Materials and Labor to paint Baseboards and Window Casing</i>		
<b>Doors</b>	<b>1 Ea</b>	<b>\$184.80</b>
<i>Materials and Labor to paint Exterior door slab. Sherwin Williams Super Paint or Cashmere</i>		
<b>Flooring</b>		<b>\$1,069.91</b>
<b>Ceramic/Porcelean Floor Tile</b>		<b>\$1,069.91</b>
<b>Floor Preparation</b>	<b>1 SF</b>	<b>\$240.04</b>
<i>Materials and Labor to apply self leveling concrete up to 1/4 inch thick for 40sqft</i>		
<b>Bathroom Floor Tile</b>	<b>38 SF</b>	<b>\$750.45</b>
<i>12 x 24 ceramic</i>		
<i>Tile allowance \$6/sqft</i>		
<b>Transition</b>	<b>1 Ea</b>	<b>\$79.42</b>
<i>Materials and Labor to install Marble/quartz in doorway.</i>		

Item	Quantity	Amount
<b>Electrical</b>		<b>\$925.63</b>
Fans, Lighted Bath Exhaust Fans, Exhaust Air deluxe bath fan with light, NuTone, 100 CFM, 3.5 sones	1 Ea	\$509.67
Electrical, Switches and Receptacles, GFCI receptacle, 15 amps, white <i>15-amp shock guard ground fault circuit interrupter. Side- and back-wired to accept 12 gauge wire. Shallow design allows for easy installation</i>	1 Ea	\$203.70
Vanity Light <i>Includes outlet or switch and cover only (no wire or box)</i>	1 Ea	\$212.26
<b>Misc.</b>		<b>\$414.94</b>
Towel Bar, Toilet Paper Holder, Mirror	1 SF	\$319.51
Doors Knobs	1 Ea	\$64.76
Hardware, Door stops, Wall bumper, 3" long, brass <i>Materials and Labor to install door stops</i>	2 Ea	\$30.67
<b>Hall Main</b>		<b>\$3,904.80</b>
<b>Flooring</b>		<b>\$1,085.74</b>
<i>Includes utility closet</i>		
Underlayment <i>6 mil plastic</i>	80 SF	\$50.34
Luxury Vinyl Plank Flooring <i>Materials and Labor to install Luxury Vinyl Plank flooring.</i>  <i>Flooring allowance \$4.00/ sqft</i>  <i>Flooring is figured at a 10% waste and will be calculated to the nearest full box.</i>  <i>Some floorings will require underlayment. Additional charges will apply to install underlayment.</i>	80 SF	\$726.44
Materials and Labor to install and paint shoe molding <i>Labor costs here can also be used for hardwood moldings in the previous section</i>	78 LF	\$308.96
<b>Doors</b>		<b>\$627.03</b>
Doors, Bi-Fold Closet Doors, Bi-fold door hardware, Hardware set	1 Ea	\$62.74
Doors, Bi-Fold Closet Doors, 2-door colonist molded face bi-fold closet doors, 2-panel colonist molded face bi-fold closet doors, 30" x 78" <i>1-3/8" thick. Primed. Two panels</i>	1 Ea	\$345.25
Doors, Prehung Interior Doors, Flush prehung lauan interior doors, 30" x 80"	1 Ea	\$219.04
<b>Painting</b>		<b>\$1,164.96</b>
Ceilings <i>Materials and Labor to paint 1 coat primer, 2 coats flat or eggshell wall paint Sherwin Williams Super-paint or Cashmere</i>	58 SF	\$140.08

Item	Quantity	Amount
<i>Paint includes light prep, filling of nail holes etc. Actual drywall work could incur additional charges.</i>		
<b>Walls</b>	<b>320 SF</b>	<b>\$729.68</b>
<i>Materials and Labor to paint 1 coat primer, 2 coats flat or eggshell wall paint Sherwin Williams Super-paint or Cashmere</i>		
<i>Paint includes light prep, filling of nail holes etc. Actual drywall work could incur additional charges.</i>		
<b>Trim</b>	<b>40 LF</b>	<b>\$110.40</b>
<i>Materials and Labor to paint Baseboards and Window Casing</i>		
<b>Doors</b>	<b>1 Ea</b>	<b>\$184.80</b>
<i>Materials and Labor to paint Exterior door slab. Sherwin Williams Super Paint or Cashmere</i>		
<b>Electrical</b>		<b>\$946.98</b>
<b>Materials and Labor to replace existing light switches and receptacles and cover plates with new standard white toggle switches and receptacles.</b>	<b>2 Ea</b>	<b>\$61.76</b>
<i>Includes outlet or switch and cover only (no wire or box)</i>		
<b>Flush mount light</b>	<b>1 Ea</b>	<b>\$109.13</b>
<i>7-3/8" diameter x 4-1/2" high. Uses one medium base bulb, 60-watt maximum (not included)</i>		
<b>Flooring</b>		<b>\$776.09</b>
<b>Underlayment</b>	<b>58 SF</b>	<b>\$36.49</b>
<i>6 mil plastic</i>		
<b>Luxury Vinyl Plank Flooring</b>	<b>64 SF</b>	<b>\$581.15</b>
<i>Materials and Labor to install Luxury Vinyl Plank flooring.</i>		
<i>Flooring allowance \$4.00/ sqft</i>		
<i>Flooring is figured at a 10% waste and will be calculated to the nearest full box.</i>		
<i>Some floorings will require underlayment. Additional charges will apply to install underlayment.</i>		
<b>Materials and Labor to install and paint shoe molding</b>	<b>40 LF</b>	<b>\$158.45</b>
<i>Labor costs here can also be used for hardwood moldings in the previous section</i>		
<b>Misc.</b>		<b>\$80.09</b>
<b>Hardware, Door stops, Wall bumper, 3" long, brass</b>	<b>1 Ea</b>	<b>\$15.33</b>
<i>Materials and Labor to install door stops</i>		
<b>Doors Knobs</b>	<b>1 Ea</b>	<b>\$64.76</b>
<b>Price</b>		<b>\$20,137.47</b>













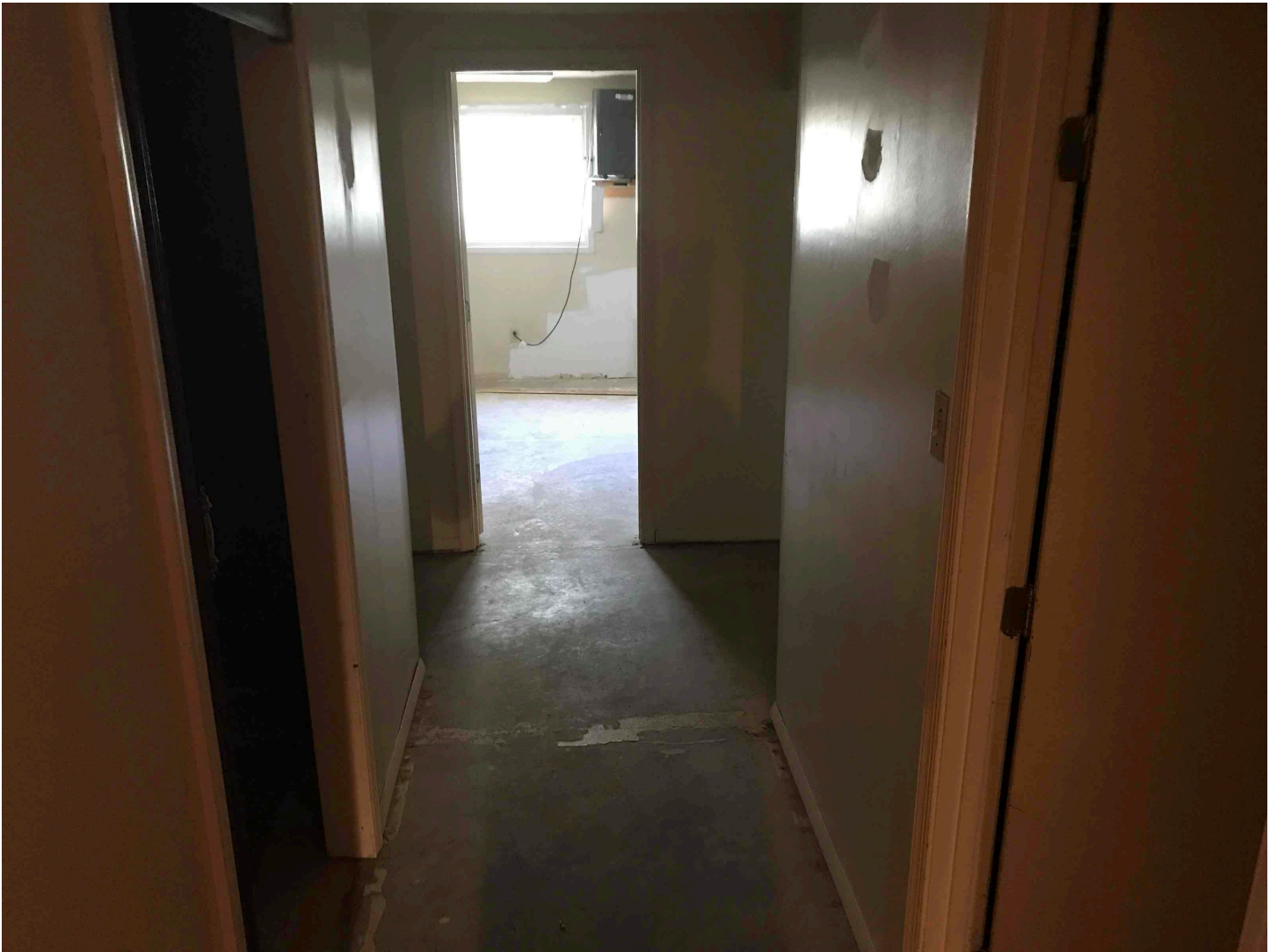










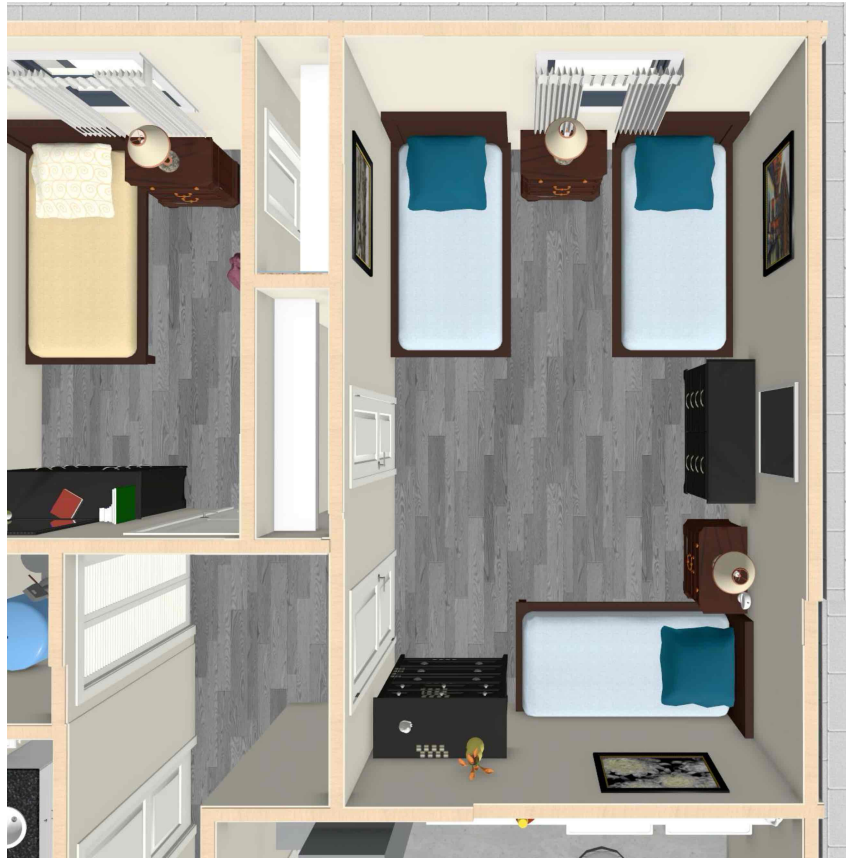


[Click Here to Return to Table of Contents](#)



# CARS™

CHRIST-CENTERED ADDICTION  
RESTORATION SERVICES



## C.A.R.S. Basement Bonus Room 1

Mailing Address  
16100 Rogers Road Culpeper Va 22701



CHRIST-CENTERED ADDICTION  
RESTORATION SERVICES

## Estimate

Job Name	C.A.R.S. Bonus Room 1
Job Number	1460 Bonus Room 1
Issue Date	November 18, 2024
Valid Until	December 18, 2024

Item	Quantity	Amount
------	----------	--------

<b>Basement Bonus Room 1</b>		<b>\$5,415.11</b>
------------------------------	--	-------------------

*Purpose unassigned, shown as bedroom option*

<b>Painting</b>		<b>\$2,447.98</b>
-----------------	--	-------------------

<b>Ceilings</b>	<b>194 SF</b>	<b>\$468.57</b>
-----------------	---------------	-----------------

*Materials and Labor to paint 1 coat primer, 2 coats flat or eggshell wall paint Sherwin Williams Super-paint or Cashmere*

*Paint includes light prep, filling of nail holes etc. Actual drywall work could incur additional charges.*

<b>Walls</b>	<b>568 SF</b>	<b>\$1,295.19</b>
--------------	---------------	-------------------

*Materials and Labor to paint 1 coat primer, 2 coats flat or eggshell wall paint Sherwin Williams Super-paint or Cashmere*

*Paint includes light prep, filling of nail holes etc. Actual drywall work could incur additional charges.*

<b>Trim</b>	<b>114 LF</b>	<b>\$314.62</b>
-------------	---------------	-----------------

*Materials and Labor to paint Baseboards and Window Casing*

<b>Doors</b>	<b>2 Ea</b>	<b>\$369.60</b>
--------------	-------------	-----------------

*Materials and Labor to paint Exterior door slab. Sherwin Williams Super Paint or Cashmere*

<b>Flooring</b>		<b>\$2,346.54</b>
-----------------	--	-------------------

<b>Underlayment</b>	<b>194 SF</b>	<b>\$122.07</b>
---------------------	---------------	-----------------

*6 mil plastic*

<b>Luxury Vinyl Plank Flooring</b>	<b>214 SF</b>	<b>\$1,943.23</b>
------------------------------------	---------------	-------------------

*Materials and Labor to install Luxury Vinyl Plank flooring.*

*Flooring allowance \$4.00/ sqft*

*Flooring is figured at a 10% waste and will be calculated to the nearest full box.*

*Some floorings will require underlayment. Additional charges will apply to install underlayment.*

Item	Quantity	Amount
<p><b>Materials and Labor to install and paint shoe molding</b>  <i>Labor costs here can also be used for hardwood moldings in the previous section</i></p>	71 LF	\$281.24
<b>Electrical</b>		<b>\$307.49</b>
<p><b>Flush mount light</b>  <i>Allowance to install 4 flush mount led lights</i></p>	1 Ea	\$153.07
<p><b>Materials and Labor to replace existing light switches and receptacles and cover plates with new standard white toggle switches and receptacles.</b>  <i>Includes outlet or switch and cover only (no wire or box)</i></p>	5 Ea	\$154.42
<b>Misc.</b>		<b>\$313.10</b>
<p><b>Horizontal blinds, 1" wide vinyl</b>  <i>Materials and Labor to install horizontal blinds</i></p>	18 SF	\$152.90
<p><b>Doors Knobs</b></p>	2 Ea	\$129.53
<p><b>Hardware, Door stops, Wall bumper, 3" long, brass</b>  <i>Materials and Labor to install door stops</i></p>	2 Ea	\$30.67
<b>Price</b>		<b>\$5,415.11</b>











[Click Here to Return to Table of Contents](#)



# CARS™

## CHRIST-CENTERED ADDICTION RESTORATION SERVICES



### **C.A.R.S. Bonus Room 2**

Mailing Address  
16100 Rogers Road Culpeper Va 22701



CHRIST-CENTERED ADDICTION  
RESTORATION SERVICES

## Estimate

Job Name	C.A.R.S. Bonus Room 2
Job Number	1460 Bonus Room 2
Issue Date	November 18, 2024
Valid Until	December 18, 2024

Item	Quantity	Amount
------	----------	--------

<b>Bonus Room 2</b>		<b>\$3,599.97</b>
---------------------	--	-------------------

*Purpose unassigned, shown as house manager bedroom option*

<b>Painting</b>		<b>\$1,790.39</b>
-----------------	--	-------------------

<b>Ceilings</b>	<b>110 SF</b>	<b>\$265.69</b>
-----------------	---------------	-----------------

*Materials and Labor to paint 1 coat primer, 2 coats flat or eggshell wall paint Sherwin Williams Super-paint or Cashmere*

*Paint includes light prep, filling of nail holes etc. Actual drywall work could incur additional charges.*

<b>Walls</b>	<b>440 SF</b>	<b>\$1,003.31</b>
--------------	---------------	-------------------

*Materials and Labor to paint 1 coat primer, 2 coats flat or eggshell wall paint Sherwin Williams Super-paint or Cashmere*

*Paint includes light prep, filling of nail holes etc. Actual drywall work could incur additional charges.*

<b>Trim</b>	<b>55 LF</b>	<b>\$151.79</b>
-------------	--------------	-----------------

*Materials and Labor to paint Baseboards and Window Casing*

<b>Doors</b>	<b>2 Ea</b>	<b>\$369.60</b>
--------------	-------------	-----------------

*Materials and Labor to paint Exterior door slab. Sherwin Williams Super Paint or Cashmere*

<b>Flooring</b>		<b>\$1,385.83</b>
-----------------	--	-------------------

<b>Underlayment</b>	<b>110 SF</b>	<b>\$69.21</b>
---------------------	---------------	----------------

*6 mil plastic*

<b>Luxury Vinyl Plank Flooring</b>	<b>121 SF</b>	<b>\$1,098.75</b>
------------------------------------	---------------	-------------------

*Materials and Labor to install Luxury Vinyl Plank flooring.*

*Flooring allowance \$4.00/ sqft*

*Flooring is figured at a 10% waste and will be calculated to the nearest full box.*

*Some floorings will require underlayment. Additional charges will apply to install underlayment.*

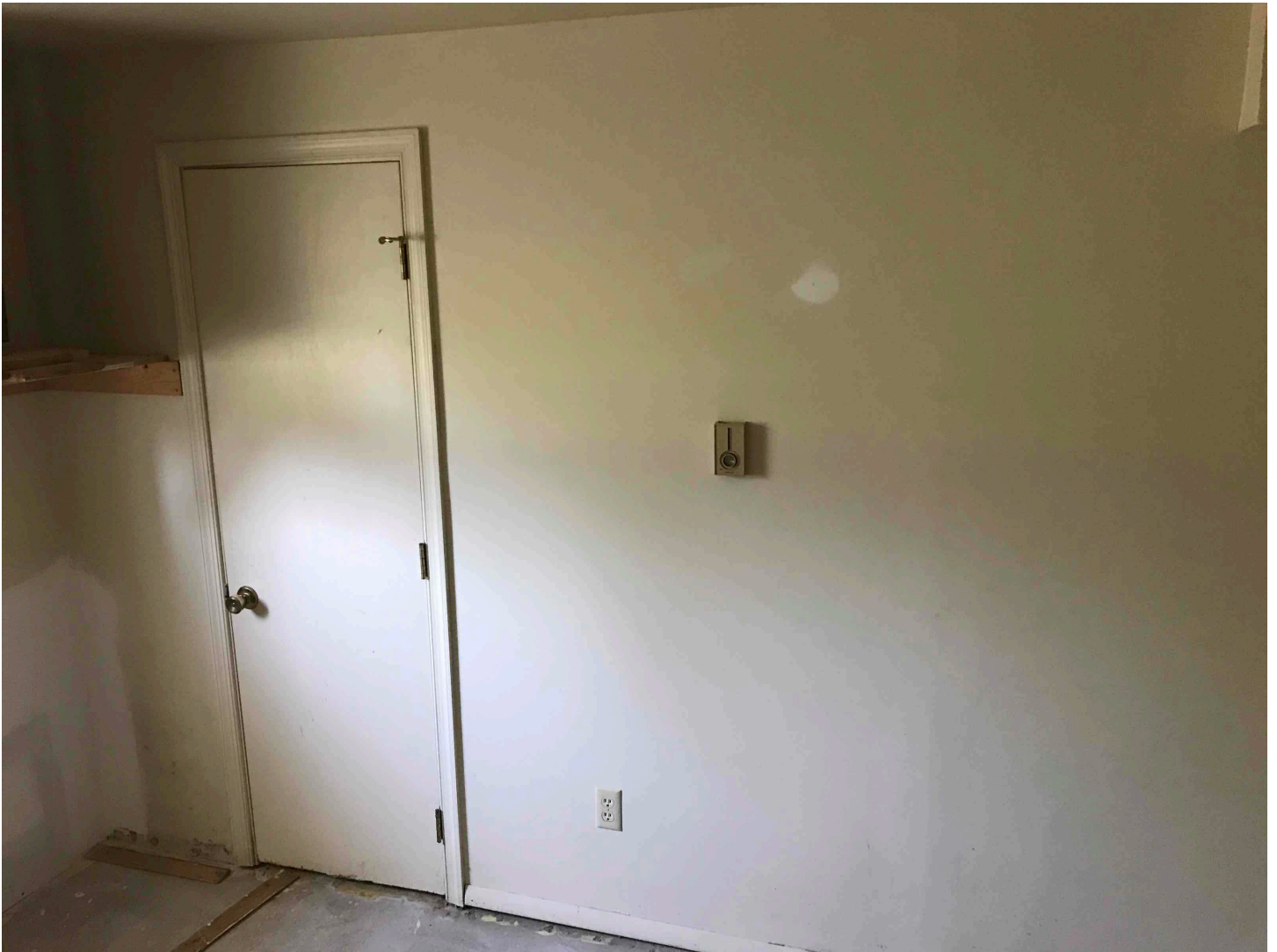
Item	Quantity	Amount
<p><b>Materials and Labor to install and paint shoe molding</b></p> <p><i>Labor costs here can also be used for hardwood moldings in the previous section</i></p>	55 LF	\$217.87
<b>Electrical</b>		<b>\$263.55</b>
<p><b>Materials and Labor to replace existing light switches and receptacles and cover plates with new standard white toggle switches and receptacles.</b></p> <p><i>Includes outlet or switch and cover only (no wire or box)</i></p>	5 Ea	\$154.42
<p><b>Flush mount light</b></p> <p><i>7-3/8" diameter x 4-1/2" high. Uses one medium base bulb, 60-watt maximum (not included)</i></p>	1 Ea	\$109.13
<b>Misc.</b>		<b>\$160.20</b>
<p><b>Doors Knobs</b></p>	2 Ea	\$129.53
<p><b>Hardware, Door stops, Wall bumper, 3" long, brass</b></p> <p><i>Materials and Labor to install door stops</i></p>	2 Ea	\$30.67
<b>Price</b>		<b>\$3,599.97</b>

















[Click Here to Return to Table of Contents](#)

# CARS™

CHRIST-CENTERED ADDICTION  
RESTORATION SERVICES



## C.A.R.S. Basement Utility

Mailing Address  
16100 Rogers Road Culpeper Va 22701



CHRIST-CENTERED ADDICTION  
RESTORATION SERVICES

## Estimate

Job Name	C.A.R.S. Basement Utility
Job Number	1460 Basement Utility
Issue Date	November 17, 2024
Valid Until	December 17, 2024

Item	Quantity	Amount
<b>Basement Utility</b>		<b>\$10,954.73</b>
<b>Demolition Ceiling</b> <i>Materials and Labor to remove existing drop ceiling</i>	1 SF	\$210.01
<b>Drywall Ceiling</b> <i>Materials and Labor to hang and finish drywall on ceiling</i>	111 SF	\$6,539.68
<b>Framing</b> <i>Materials and Labor to block and frame ceiling for drywall</i>	1 SF	\$353.01
<b>HVAC</b> <i>Rework return from upstairs to make for a more efficient use of space</i>  <i>Allowance</i>	1 SF	\$500.00
<b>Painting Walls</b> <i>Materials and Labor to paint 1 coat primer, 2 coats flat or eggshell wall paint Sherwin Williams Super-paint or Cashmere</i>  <i>Paint includes light prep, filling of nail holes etc. Actual drywall work could incur additional charges.</i>	1,028 SF	\$2,344.10
<b>Luxury Vinyl Plank Flooring</b> <i>Materials and Labor to install Luxury Vinyl Plank flooring.</i>  <i>Flooring allowance \$4.00/ sqft</i>  <i>Flooring is figured at a 10% waste and will be calculated to the nearest full box.</i>  <i>Some floorings will require underlayment. Additional charges will apply to install underlayment.</i>	111 SF	\$1,007.93
<b>Price</b>		<b>\$10,954.73</b>









[Click Here to Return to Table of Contents](#)



# CARS™

CHRIST-CENTERED ADDICTION  
RESTORATION SERVICES



## C.A.R.S. HVAC

Mailing Address  
16100 Rogers Road Culpeper Va 22701



CHRIST-CENTERED ADDICTION  
RESTORATION SERVICES

## Estimate

Job Name	C.A.R.S. HVAC
Job Number	1492
Issue Date	November 18, 2024
Valid Until	December 18, 2024

Item	Quantity	Amount
<b>HVAC</b>		<b>\$6,433.28</b>
<b>Main Floor</b>		<b>\$5,515.00</b>
Mini Split air conditioner in Sunroom <i>9000 btu Mitsubishi</i>	1 SF	\$5,000.00
Replace Register Covers Throughout	10 SF	\$515.00
<b>Basement</b>		<b>\$918.28</b>
HVAC Basement <i>Add registers to each room and minimum 2 in large room</i>	5 Ea	\$918.28
<b>Price</b>		<b>\$6,433.28</b>

[Click Here to Return to Table of Contents](#)